



AVK SUPA MAXI™ STRAIGHT COUPLING, PN 16

631/10

Universal, non-tensile, A2 bolts, EPDM sealings

001

AVK's Supa Maxi™ range of universal non-tensile couplings sets a new standard. The patented SupaGrip™ sealing support system with flexible bracket ensures full support of the gasket on all pipe types up to PN 16. Supa Maxi™ couplings are very easy to mount with the possibility of $\pm 4^\circ$ angular deflection, the permanent protection caps, the lifting eye and the fact that they are tightened from the sleeve side with no need for re-tightening the bolts. NB: Not recommended for PE pipes, use tensile version instead.

Product Description:

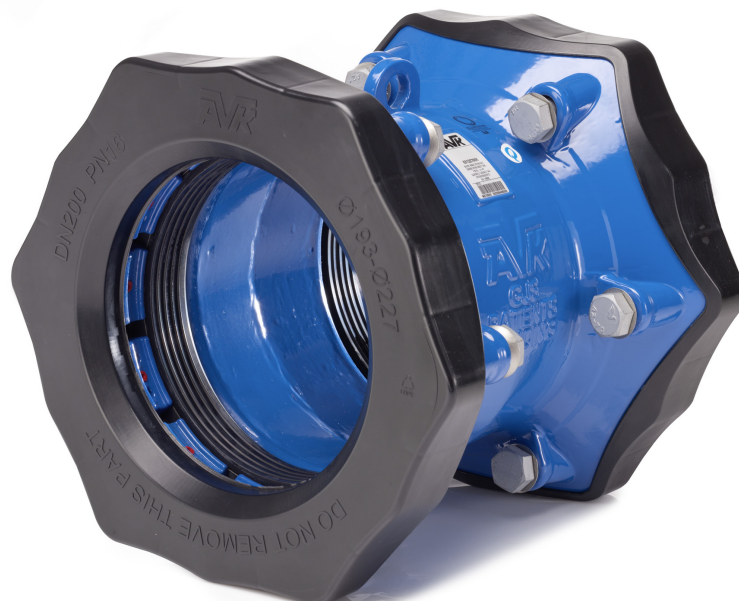
Supa Maxi™ straight coupling - universal/non tensile - A2 bolts/A4 nuts for drinking water and neutral liquids -20°C to +70°C

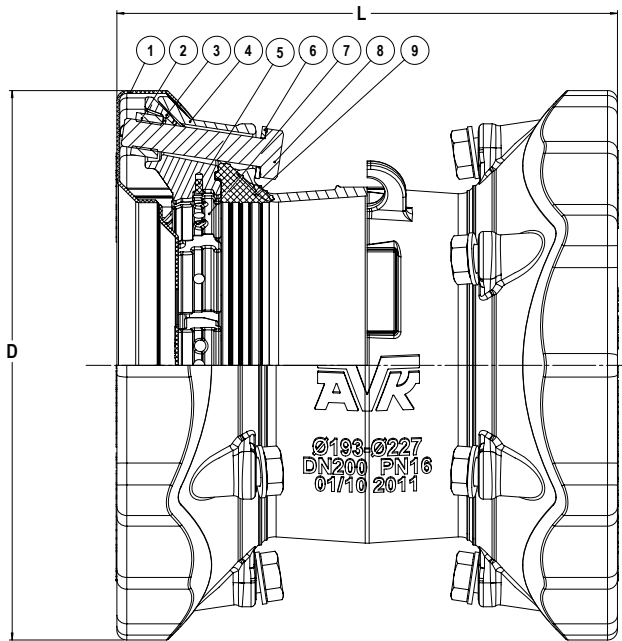
Standards:

- Designed according to EN 14525

Features:

- Patented SupaGrip™ sealing support system with flexible bracket ensures full support of the gasket even at minimum pipe size
- $\pm 4^\circ$ angular deflection on each side at max. 1.5 x PN 16
- Large tolerance ranges
- All DN's are for PN 16 (stainless steel, AC, Bi-PVC, and CFW GRP pipes max. PN 10)
- Ductile iron body and bracket of cast steel, epoxy coated according to DIN 30677-2 and GSK approved
- Gasket of drinking water approved EPDM rubber
- Bolts of A2 and nuts of A4 are anti-friction coated to prevent galling
- Permanent protection caps protect the coupling during handling and installation
- The pipe will not move inwards when tightening
- Bolts are tightened from the sleeve side for full access when space is limited
- Re-tightening of bolts is not necessary
- Lifting eye in DN 100-400
- Design pressure 29 bar according to EN 14525 (DN 400: 27 bar for PE-pipes). Working pressure max. 16 bar. Max. test pressure according to pipe standard.





DN	
50	3 x M14 x 75 mm
65	3 x M16 x 75 mm
80	3 x M16 x 75 mm
100	4 x M16 x 75 mm
125	4 x M16 x 75 mm
150	4 x M16 x 90 mm
200	6 x M20 x 100 mm
225	6 x M20 x 100 mm
250	6 x M20 x 100 mm
300	8 x M20 x 100 mm
400	10 x M24 x 120 mm

Component List:

1. Protection cap	Recyclable PE	2. Nut	Acid resistant stainless steel A4
3. Bracket	Cast steel	4. Sleeve	Ductile iron GJS-450 (GGG-45)
5. Bolt cap	Plastic	6. Washer	Stainless steel A2
7. Bracket	Cast steel	8. Bolt	Stainless steel A2
9. Gasket	DVGW/NF approved EPDM rubber		

Components may be substituted with equivalent or higher class materials without prior notification.

Reference Nos. and Dimensions:

AVK ref. nos	DN mm	Product PN Class	T mm	L mm	D mm	Theoretic. weight kg
631-071-10-6	50	PN16	48 - 71	255	200	6.0
631-091-10-6	65	PN16	69 - 91	265	226	7.0
631-106-10-6	80	PN16	82 - 106	268	235	7.5
631-133-10-6	100	PN16	104 - 133	315	268	11
631-161-10-6	125	PN16	132 - 161	277	285	13
631-188-10-6	150	PN16	159 - 188	314	340	16
631-227-10-6	200	PN16	193 - 227	354	389	25
631-257-10-6	225	PN16	224 - 257	390	437	30
631-301-10-6	250	PN16	266 - 301	381	476	35
631-356-10-6	300	PN16	314 - 356	438	545	45
631-442-10-6	400	PN16	392 - 442	526	661	91