



## AVK SERIES 603 UNIVERSAL SUPA® FLANGE ADAPTOR

603/A

Mild steel Sheraplex bolts/nuts, WRAS approved EPDM sealings

4100

AVK Supa® is a range of universal straight couplings, step couplings and flange adaptors for cast iron, ductile iron, steel, uPVC and asbestos cement pipes. Supa® couplings are easy to mount due to the anti-friction coated bolts and nuts and the possibility of up to  $\pm 4^\circ$  angular deflection. The stainless steel bolts and nuts and the high quality coating offer a durable corrosion protection.

### Product Description:

Supa® adaptor - Bolts of mild steel for drinking water and neutral liquids to max. 70°C

### Standards:

- Standard flange drilling to EN1092-2 (ISO 7005-2), PN 16

### Test/Approvals:

- WRAS approved Materials

### Features:

- $\pm 4^\circ$  angular deflection
- Drinking water approved EPDM gasket
- The bolts and nuts are anti-friction coated to offer easy tightening and to prevent galling
- The bolt ends are protected with plastic caps
- The moulded ribs in the gasket absorb minor imperfections in the pipe
- Versatile design tolerances typical 26 mm to cover all pipe materials
- Ductile iron with epoxy coating according to DIN 30677-2 and AVK guidelines

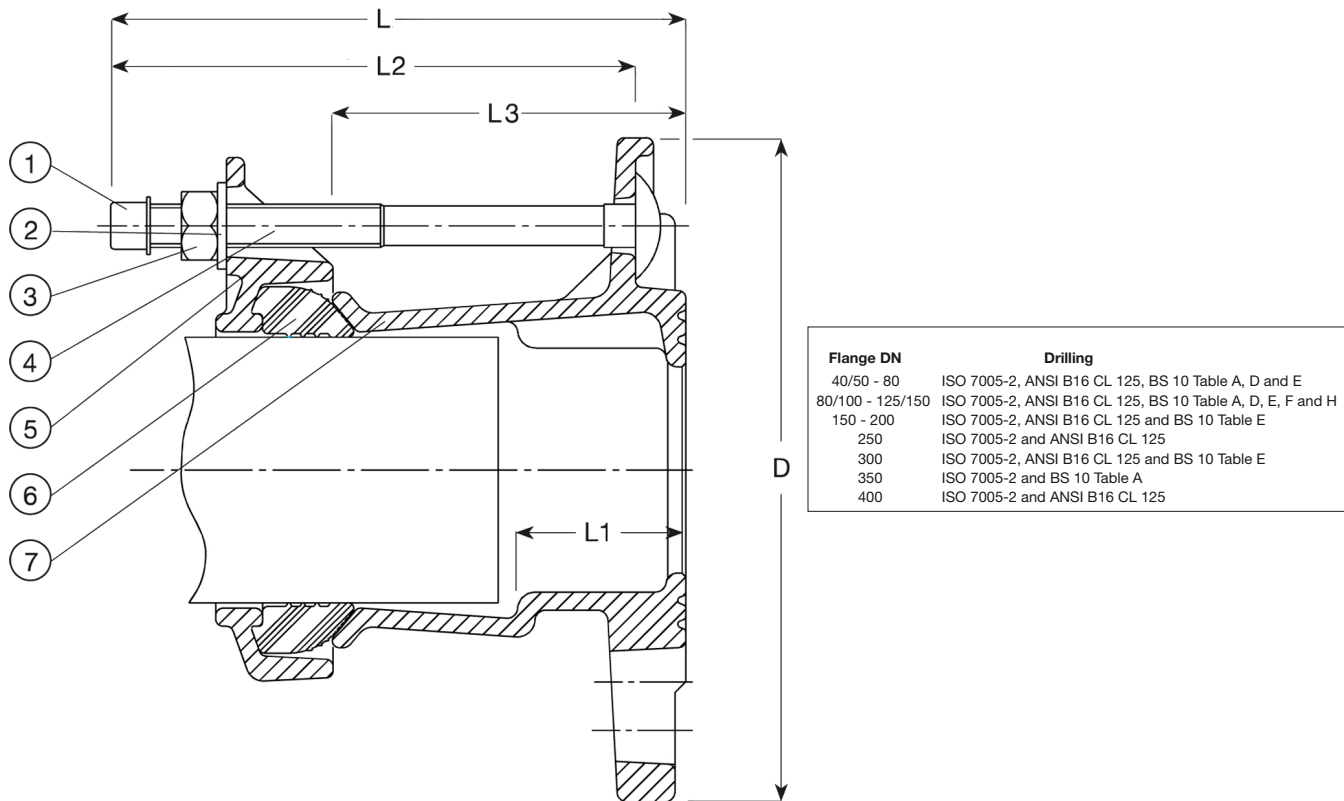


# AVK SERIES 603 UNIVERSAL SUPA® FLANGE ADAPTOR

603/A

Mild steel Sheraplex bolts/nuts, WRAS approved EPDM sealings

4100



## Component List:

1. End cap	Plastic	2. Washer	Hot dip galvanized steel
3. Nut	Mild steel, sheraplex	4. Bolt	Mild steel, sheraplex
5. Bracket	Ductile iron, EN-GJS-500-7(GGG-50)	6. Gasket	EPDM
7. Adaptor flange	Ductile iron, EN-GJS-500-7(GGG-50)		

Components may be substituted with equivalent or higher class materials without prior notification.

## Reference Nos. and Dimensions:

AVK ref. nos	DN mm	L mm	L1 mm	L2 mm	L3 mm	D mm	Sealing Range mm	Theoretic. weight kg
603-063-000-4100	40/50	159	47	145	98	165	46 - 63	3.8
603-074-000-4100	50	159	47	145	98	172	57 - 74	3.9
603-074-001-4100	50/60	159	47	145	98	185	57 - 74	4.1
603-085-000-4100	50/60	159	47	145	98	185	68 - 85	4.2
603-106-000-4100	80	159	47	145	100	200	84 - 106	5.0
603-106-001-4100	80/100	159	47	145	100	200	84 - 106	5.9
603-119-000-4100	100	159	47	145	100	254	99 - 119	5.6
603-133-000-4100	100	159	47	145	101	240	109 - 133	5.8
603-133-001-4100	100/125	159	47	145	101	240	109 - 133	5.8
603-157-000-4100	125/150	184	58	170	111	285	132 - 157	8.3
603-183-000-4100	150	184	56	170	109	293	157 - 183	9.3
603-183-002-4100	150	184	56	170	109	293	157 - 183	9.3
603-201-000-4100	150	184	69	170	112	313	176 - 201	11
603-215-000-4100	200	182	110	170	117	343	193 - 215	12
603-242-000-4100	200	182	65	170	117	353	218 - 242	12
603-242-002-4100	200	182	65	170	117	353	218 - 242	12
603-268-000-4100	250	182	110	170	119	406	242 - 268	17
603-292-000-4100	250	182	61	170	119	406	266 - 292	19
603-292-002-4100	250	182	61	170	119	406	266 - 292	18
603-306-000-4100	250	182	61	170	119	420	280 - 306	19

The designs, materials and specifications shown are subject to change without notice. This is due to the continuous development of our product programme.

AVK ref. nos	DN mm	L mm	L1 mm	L2 mm	L3 mm	D mm	Sealing Range mm	Theoretic. weight kg
603-327-000-4100	300	186	59	170	119	483	301 - 327	22
603-327-002-4100	300	186	59	170	119	458	301 - 327	22
603-350-000-4100	300	186	59	170	119	483	324 - 350	24
603-378-000-4100	350	186	110	170	119	520	352 - 378	25
603-378-002-4100	350	186	110	170	119	527	352 - 378	25
603-396-000-4100	350	226	100	210	161	496	372 - 396	30
603-396-002-4100	350	226	100	210	161	527	372 - 396	29
603-410-000-4100	350	226	100	210	161	520	384 - 410	30
603-410-002-4100	350	226	100	210	161	527	384 - 410	29
603-436-000-4100	400	226	100	210	165	597	410 - 436	35
603-436-002-4100	400	226	100	210	165	578	410 - 436	35
603-462-000-4100	400	226	100	210	165	597	436 - 462	38

The designs, materials and specifications shown are subject to change without notice. This is due to the continuous development of our product programme.