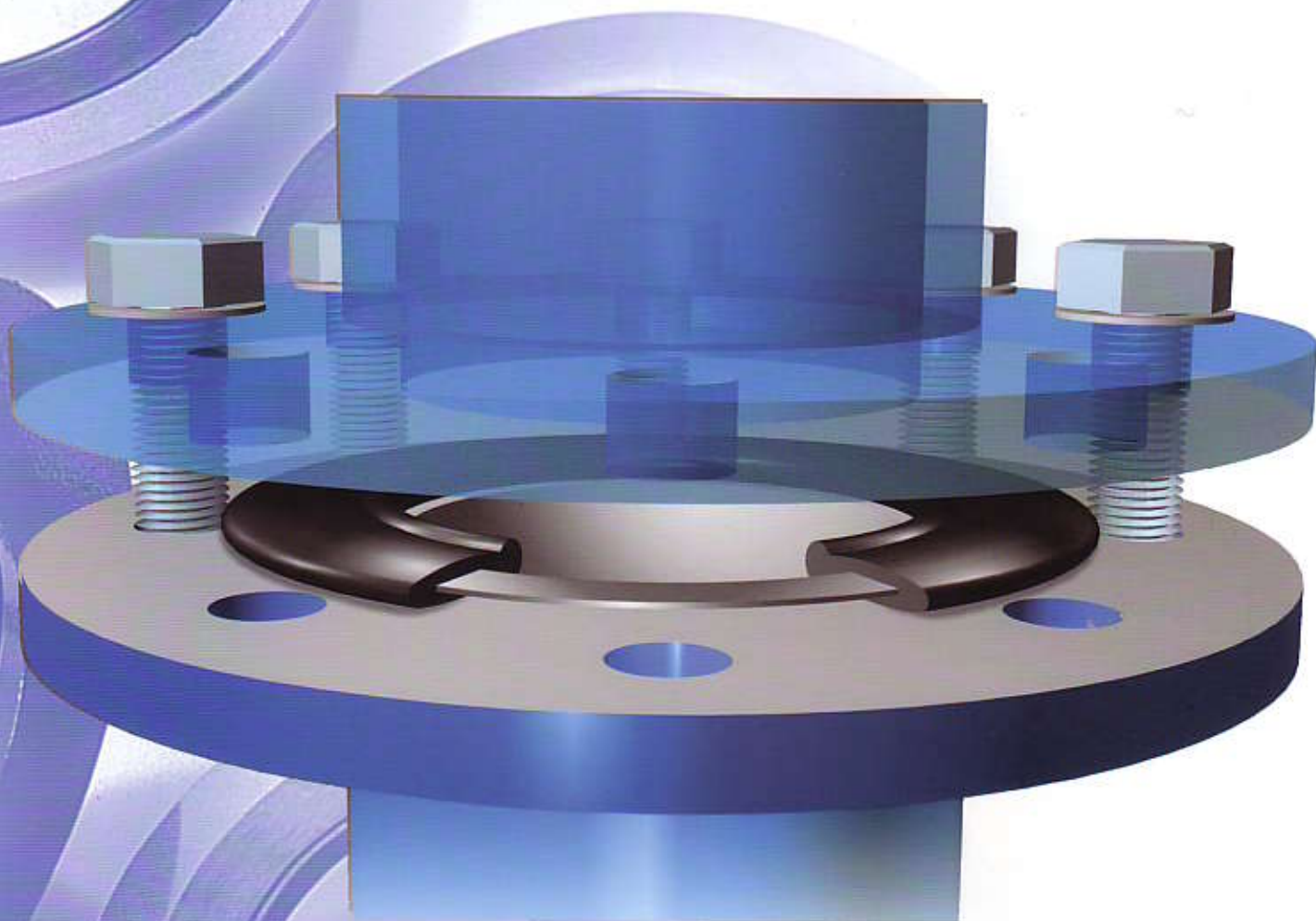


# SEALED TIGHT!



**G-ST-Flange Gaskets**  
**G-ST-Profile Gaskets**  
**G-ST-Wedge Rings**

QM-System  
zertifiziert durch:



**KROLL & ZILLER**



*The gasket people*

# G-ST-Flange Gaskets G-ST-Profile Gaskets G-ST-Wedge Rings

Rubber-steel flange gaskets and adjustable wedge rings have been proven in use over many years in all areas of pipeline construction.

Steel mills, power plants, petrochemical, pharmaceutical industries as well as numerous gas and water companies at home and abroad value the advantages of **Kroll & Ziller** sealing products.



# Product Range

# Page



**G-ST**  
For various applications.



10



**G-ST/GUSS**  
In special dimensions.  
For total covering of flange face.



13



**G-ST-P/S**  
For various applications, top choice  
for joints connecting non-metallic  
(plastics or GRP) and steel flanges.



14



**G-ST-P/K**  
To suit flange joints connecting  
pairs of plastic stub ends.



16



**G-ST-P/KN**  
For various applications, top choice  
for partially coated flanges  
and heavy duty services.



18



**G-ST-P/HTB**  
For steel flange connections in  
Fire Safe pipelines.



23



**G-ST-P/OE**  
Flexible design gasket with  
visible stainless steel insert.



24



**G-ST-P/GR**  
To suit pipework with soft rubber  
lining and flange faces with  
soft/hard rubber coating.



25



**G-ST-Wedge Ring**  
Infinitely variable from 0° to 8°.



26

# G-ST-Profile Gaskets

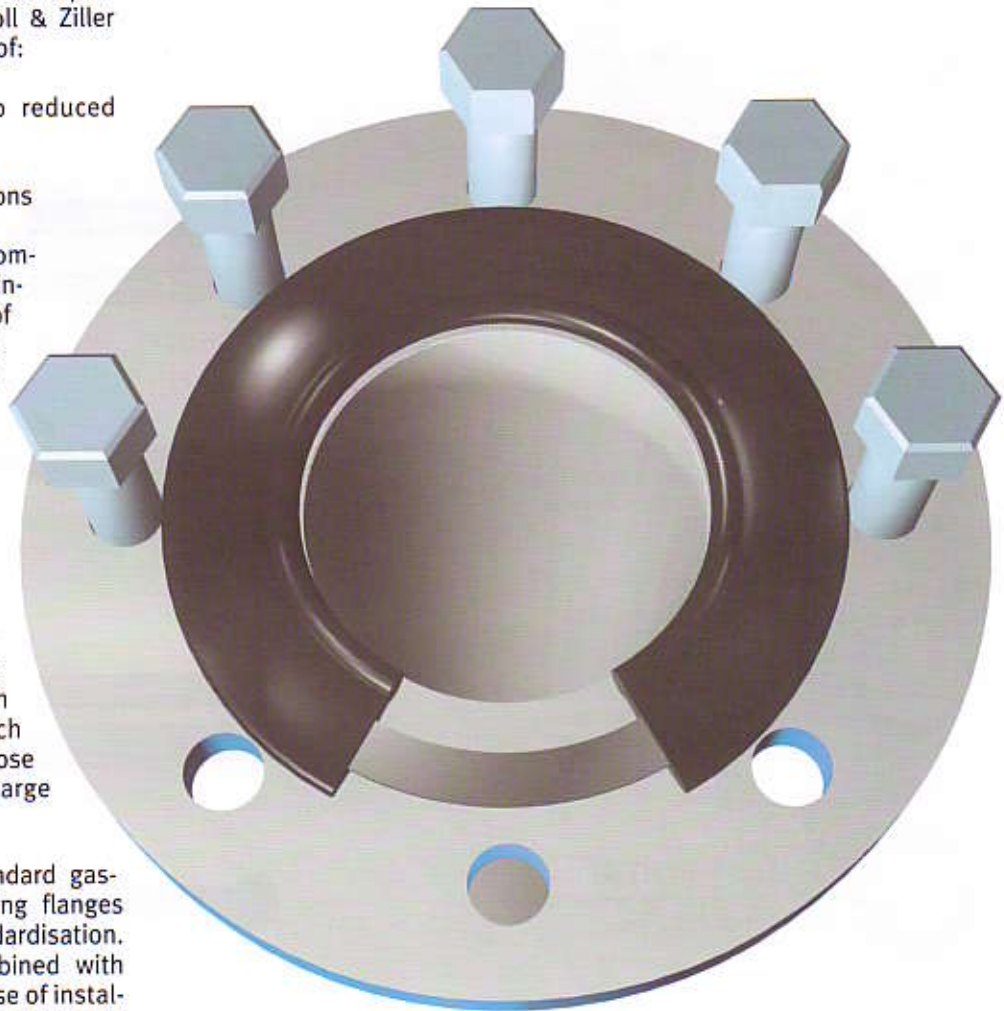
With 40 years of experience in solving individual sealing problems, we can provide you with a range of flange gaskets of exceptional operating reliability. With Kroll & Ziller gaskets you can be sure of:

- high efficiency due to reduced operating costs
- reduced fugitive emissions

Growing international competition makes cost minimisation in all areas of production necessary. Production disruptions and rejections, maintenance and repair costs must be prevented by choosing the best possible construction materials. The risk of possible environmental pollution must be eliminated. The policy of Kroll & Ziller over the last 15 years has been specialisation, research and development in close collaboration with a large number of customers.

The wide range of standard gaskets available for sealing flanges allows top quality standardisation. High efficiency is combined with superb handling. The ease of installation is attributed to the rigid steel core even with large nominal widths and undesirable stresses. If you have a problem in choosing suitable gaskets, the experienced KROLL & ZILLER sales team is here to assist you.

**With steel insert  
Flange bolts center the gaskets**



## G - ST - P / \*

- |     |                                    |
|-----|------------------------------------|
| S   | for Steel pipes                    |
| K   | for Plastic pipes                  |
| KN  | for non-load bearing flange joints |
| OE  | visible SS insert                  |
| HTB | for Fire safe                      |
| GR  | for Rubber lined pipes             |
| P   | for Profile                        |
| ST  | with Steel insert                  |
| G   | for Rubber material                |



# G-ST-Profile Gaskets

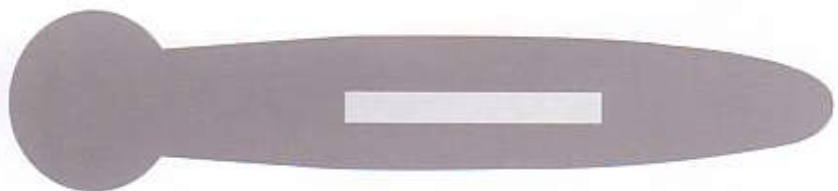
## Proven in practice

Reliable sealing of flanged joints on pipelines has been made possible by the development of KROLL & ZILLER G-ST gaskets. Vulcanization provides an extremely good adhesion between the steel insert and the rubber sheath. Even when stressed to extremes, separation or blow-outs are not possible. Dimensions in accordance with standards prevents unnecessary flowrate reductions due to part-blocked cross-sections. Additionally, there is optimum handling during installation, since the gasket is self-centering on the bolt circle. The combination of these features makes the G-ST gasket the right choice for you.



## The new generation

The G-ST-P profile gasket range illustrates the technological progress of KROLL & ZILLER. The basic concept is very clear in the graphic illustration of the gasket cross-section. The G-ST main body is combined with a round cord ring. This "O-ring" is the most static sealing element. The performance of this O-ring is almost miraculous even without a cost-intensive groove. The G-ST-P profile gasket combines the advantages of its individual parts. High surface pressures transmitted from the main force of the flow are absorbed by the rigid body of the G-ST gasket. The flat steel-ring, corrosion protected by being vulcanized in, absorbs the required test pressure with ease. The O-ring lying parallel to the main force of



the flow is ideally compressed against the sealing faces even at low surface pressures. Irregularities and grooves, even slight misalignments are compensated. Also, the gasket shows insensitivity to the minimum torques required during installation which spares the material. A degree of operating reliability - never before reached - is assured. Once in position - it is **sealed tight!** These advantages are especially important for flange joints of thermoplastics (PVC, PE, PP, PVDF). The special KROLL & ZILLER

gasket G-ST-P/S has the following advantages:

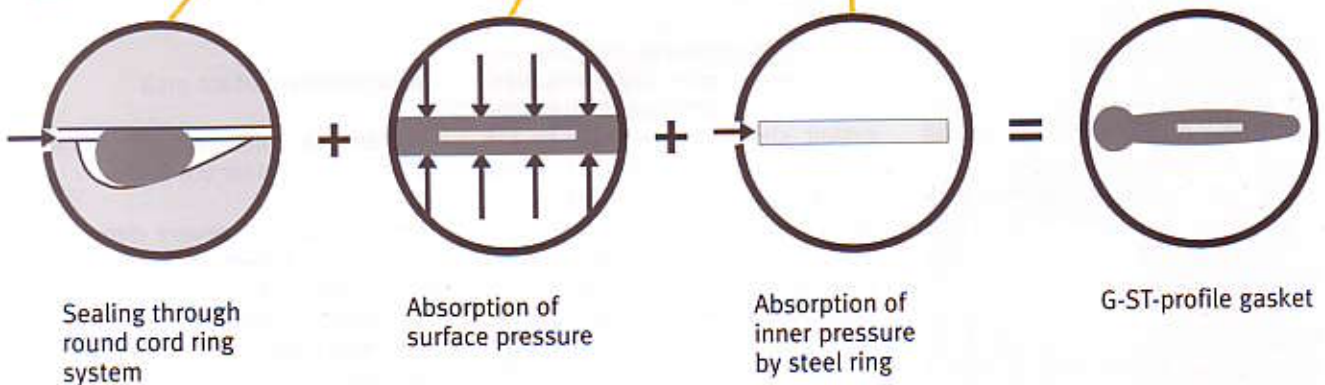
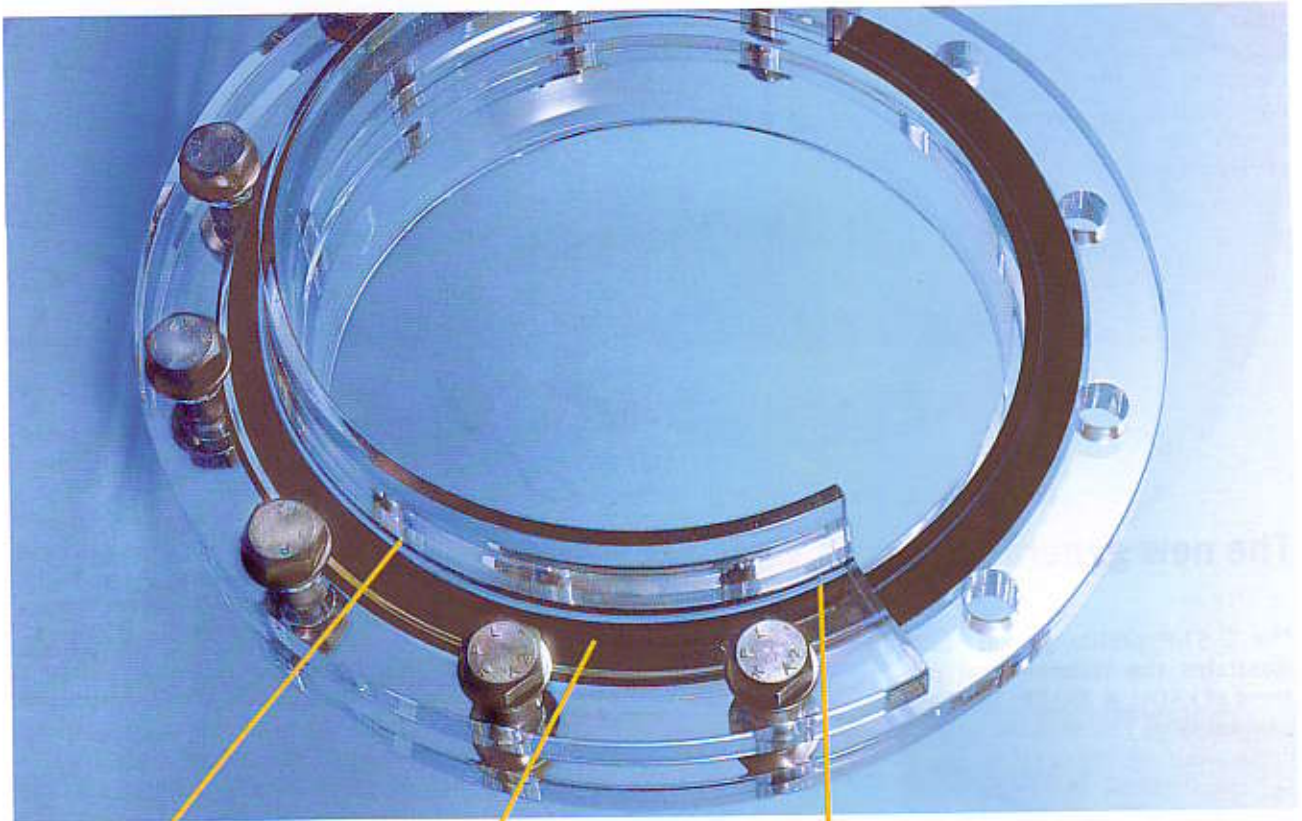
- wide sealing surface area
- rectangular instead of round cross-section near the O-ring

These attributes prevent deformation of the flange adapters. The round cord ring fills the enlarged gap reliably. Minimum required tightening torques protect the joining elements from being overloaded.

# G-ST-Profile Gaskets

## Benefits linked to G-ST-P gasket applications:

- sealing under minimum bolt tightening
- compensation of surface imperfections
- flange and bolt designs can be more lightweight
- higher durability of plastic flange joints
- angle differences are more easily compensated compared to simple flat gaskets
- expensive machining of an O-ring groove on the flange is unnecessary



## Electrical characteristics of material used for gaskets

The surface resistance  $R_0$  and the isolation resistance  $\rho_D$  has been determined according to DIN 53482, arrangement of electrodes style "C".

The desruptive voltage  $U_d$  has been tested due to DIN IEC 243-2/VDE 0303, part 22 with direct current.

(An electrode with a diameter of 25 mm combined with grounded electrode with a diameter of 75 mm in accordance with DIN VDE 0303, part 21.)

The tests involved items with a thickness of 1 and 5 mm.



material	$R_0$ ( $\Omega$ ) 1mm	$R_0$ ( $\Omega$ ) 5mm	$\rho_D$ ( $\Omega$ ) 1mm	$\rho_D$ ( $\Omega$ ) 5mm	Test voltage (V)	$U_d$ (kV) 1mm	$U_d$ (kV) 5mm
EPDM	$0.45 \times 10^3$	$0.85 \times 10^3$	$0.5 \times 10^3$	$0.6 \times 10^3$	1	nb	nb
NBR-DUO	$3.30 \times 10^3$	$5.35 \times 10^3$	$1.5 \times 10^3$	$3.2 \times 10^3$	10	nb	nb
CSM	$2.55 \times 10^{12}$	$1.15 \times 10^{12}$	$5.5 \times 10^{10}$	$8.9 \times 10^{10}$	100	>15	>15
FPM-S	$2.45 \times 10^{11}$	$2.35 \times 10^{10}$	$6.2 \times 10^9$	$7.4 \times 10^9$	100	>6	>15

nb = without results

## Gasket parameters

due to DIN 28 090-1

due to ASME  
Code Section VIII Div. 1  
Table UA. 49.1

Profile			G-ST, P/S P/K, P/OE	G-ST, P/S P/K, P/OE	P/KN	P/KN	G-ST, P/S, P/K, P/OE		
materials			NBR CR, NR, EPDM, IIR	FPM-S, CSM	NBR, CR, NR EPDM, IIR	FPM-S, CSM	NBR, CR NR, EPDM IIR, CSM FPM-S		
recommended flange face roughness $R_a$	$\mu\text{m}$	max.	160	160	160	160	$R_a$	$\mu$ inch	500
surface pressure limits for 20° C	N/mm <sup>2</sup>	$\delta_{VU/L}$ $\delta_{VO}$	2 15	2 9	2 450	15 450	<b>m</b> <b>y</b>	- psi	1.00 200
surface pressure limits for 150° C	N/mm <sup>2</sup>	$\delta_{BU/L}$ $\delta_{BO}$	- -	2 5	- -	(15) (435)			

# G-ST-Profile Gaskets

## Extra reliability

The KROLL & ZILLER gasket range was proven in the testing.

Test parameters:

- medium: water
- temperature: 20° C / 68° F
- test pressure: 10 bar / 143 psi

Test samples

20" Gasket

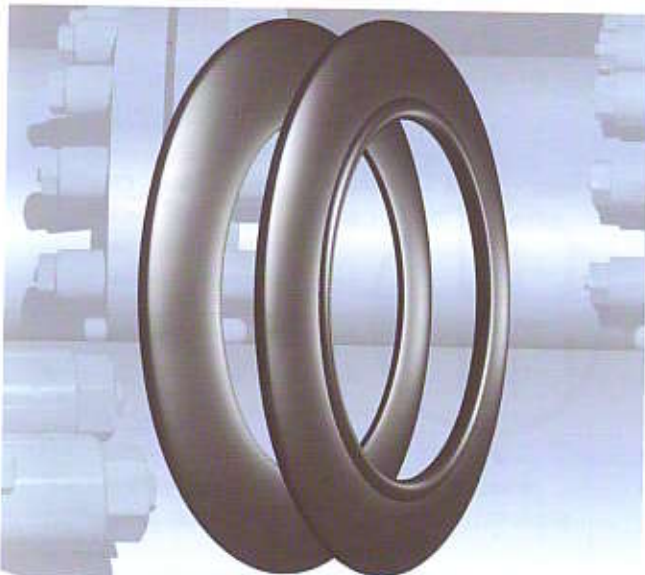
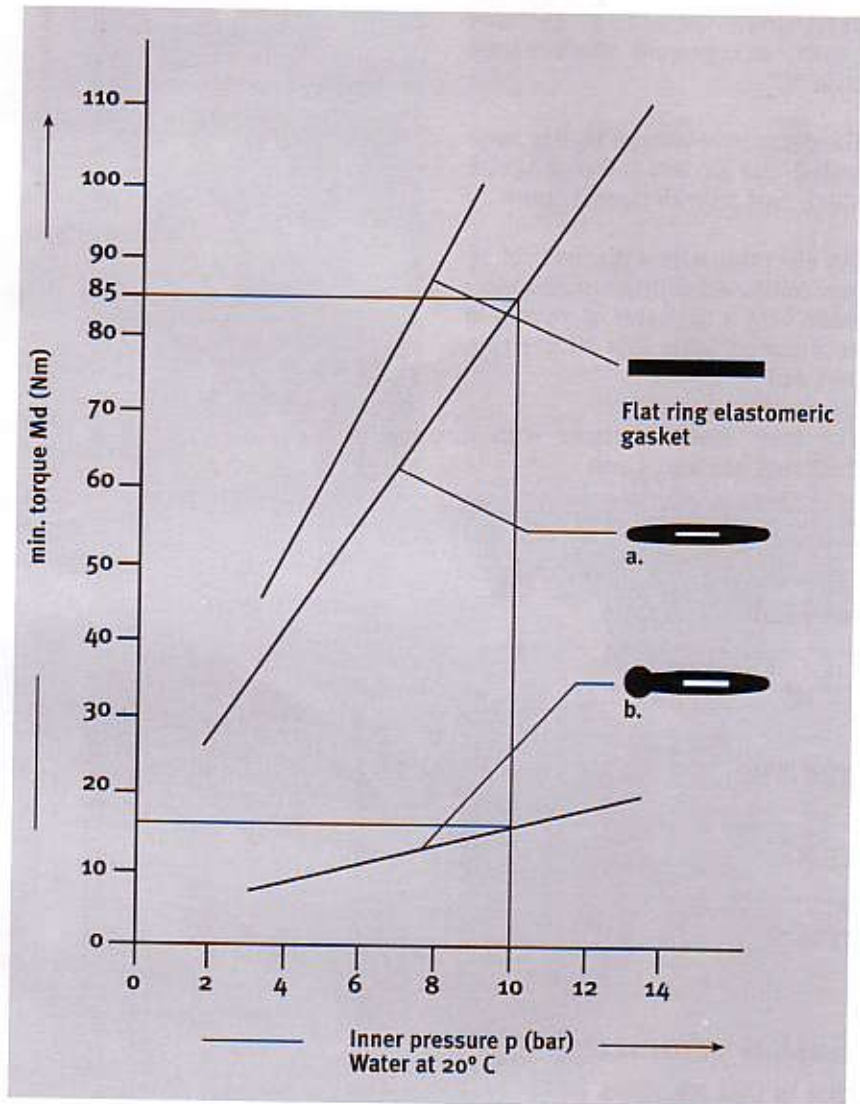
a = G-ST flange gasket  
NBR-DUO

b = G-ST-P/S-profile flange gasket  
NBR-DUO

c = Flat rubber gasket with textile  
insert NBR

The result of the test series is shown in the graph:

With a pressure of 10 bar / 143 psi only a fraction of the required tightening torque calculated for the G-ST flange gasket is necessary for the G-ST-P/S profile gasket. However, use of the G-ST gasket with the higher value is recommended during installation. The extra reliability offsets many uncertainties in practice.



a. = G-ST-Flange Gaskets



b. = G-ST-Profile Gaskets





## Materials:

**NR** = Natural rubber

Temp. tmax. -30...+ 60° C, Shore -A-hardness 60 ± 5  
Temp. Tmax. -22...+ 140° F

**NBR-DUO** = Acrylonitrile Butadiene rubber

DIN-DVGW test mark, reg.no. NV-5261AP1125

**DRINKING WATER**

-Test approval by DVGW / TÜV Süddeutschland according to DIN EN 681-1

-KTW recommendation 1.3.13 in the areas D1 and D2, as well as hygienic test in accordance with DVGW code of practice W 270

-FDA, 21 CFR Ch.I (04/2000), § 177.2600

**NATURAL GAS**

-Test approval by DVGW according to DIN EN 682 substitutes DIN 3535, Part 3 reg.no. NG-5113AP1125

Temp. tmax. -25...+ 70° C, Shore-A-hardness 80 ± 5

Temp. tmax. -13...+ 158° F

**HNBR** = Hydrogenated Acrylonitrile Butadiene rubber

Temp. tmax. -25...+ 150° C, Shore-A-hardness 75 ± 5

Temp. tmax. -13...+ 302° F

**CR** = Chloroprene rubber

Temp. tmax. -25...+ 95° C, Shore-A-hardness 63 ± 5

Temp. tmax. -13...+ 203° F

**CSM** = Chlorosulphonated Monomer rubber

Temp. tmax. -20...+ 120° C, Shore-A-hardness 70 ± 5

Temp. tmax. -4...+ 248° F

**EPDM\*** = Ethylene Propylene Diene Monomer rubber

-KTW recommendation 1.3.13 in the areas D1 and D2,

-FDA approved acc.to 21 CFR Ch.I (04/2000), § 177.2600

Temp. tmax. -30...+ 120° C, Shore-A-hardness 70 ± 5

Temp. tmax. -22...+ 248° F

**FPM-S\*** = Fluorinated rubber acid proof

Temp. tmax. -20...+ 200° C, Shore-A-hardness 80 ± 5

Temp. tmax. -4...+ 392° F

**IIR** = Isobutene Isoprene rubber (Butyle rubber)

Temp. tmax. -25...+ 120° C, Shore-A-hardness 55 ± 5

Temp. tmax. -13...+ 248° F

## Steel Insert

Standard: Carbon Steel

Optional: Stainless Steel

\* also available as

"HP" (high purity)

# G-ST

EN 1514-1

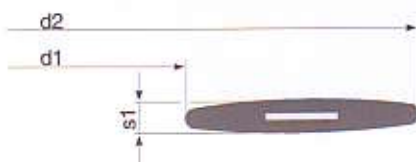
## G-ST-Flange Gaskets

similar to DIN 2690

## G-ST-Flange Gaskets

Nominal Diameter DN	Nominal Pressure PN	Dimensions in mm				
		d <sub>1</sub>	x	d <sub>2</sub>	x	s <sub>1</sub>
15	10-40	22	x	51	x	4
20	10-40	27	x	61	x	4
25	10-40	34	x	71	x	4
32	10-40	43	x	82	x	4
40	10-40	49	x	92	x	4
50	10-40	61	x	107	x	4
65	10-40	77	x	127	x	4
80	10-40	89	x	142	x	4
100	6	115	x	152	x	5
100	10-16	115	x	162	x	5
100	25-40	115	x	168	x	5
125	10-16	141	x	192	x	5
125	25-40	141	x	194	x	5
150	10-16	169	x	218	x	5
150	25-40	169	x	224	x	5
200	10-16	220	x	273	x	6
200	25	220	x	284	x	6
200	40	220	x	290	x	6
250	10	273	x	328	x	6
250	16	273	x	329	x	6
250	25	273	x	340	x	6
250	40	273	x	352	x	6
300	6	324	x	373	x	6
300	10	324	x	378	x	6
300	16	324	x	384	x	6
300	25	324	x	400	x	6
300	40	324	x	417	x	6
350	10	356	x	438	x	7
400	10	407	x	489	x	7
400	16	407	x	495	x	7
400	25	407	x	514	x	7
400	40	407	x	546	x	7
500	10	508	x	594	x	7
500	40	508	x	628	x	7
600	10	610	x	695	x	7
700	10	712	x	810	x	8
800	10	813	x	917	x	8
1000	10	1016	x	1124	x	8
1200	1-2.5	1220	x	1290	x	8
1200	6	1220	x	1307	x	8
1200	10	1220	x	1341	x	8
1200	16	1220	x	1342	x	8
1600	2.5	1620	x	1700	x	8
1600	10	1620	x	1772	x	8
1800	10	1820	x	1972	x	8
2000	10	2020	x	2182	x	8

Nominal Diameter DN	Nominal Pressure PN	Dimensions in mm				
		d <sub>1</sub>	x	d <sub>2</sub>	x	s <sub>1</sub>
50	10-40	57	x	107	x	4
100	10-16	108	x	162	x	5
100	25-40	108	x	167	x	5
125	6	141	x	182	x	5
125	10-16	133	x	192	x	5
150	6	169	x	207	x	5
150	10-16	159	x	218	x	5
175	10-16	195	x	248	x	5
175	40	195	x	267	x	5
200	10-16	216	x	273	x	6
200	25	216	x	285	x	6
250	10	267	x	328	x	6
300	10	318	x	378	x	6
350	6	368	x	423	x	7
350	10	368	x	438	x	7
350	16	368	x	445	x	7
350	25	368	x	458	x	7
350	40	368	x	475	x	7
400	6	420	x	473	x	7
400	10	420	x	490	x	7
400	16	420	x	497	x	7
400	25	420	x	515	x	7
400	40	420	x	547	x	7
450	10	470	x	540	x	7
500	6	520	x	575	x	7
500	10	520	x	595	x	7
500	16	520	x	618	x	7
500	25	520	x	625	x	7
600	10	620	x	695	x	7
600	16	620	x	735	x	7
600	25	620	x	730	x	7
600	40	620	x	745	x	7
700	6	720	x	785	x	8
700	10	720	x	810	x	8
800	6	820	x	890	x	8
800	10	820	x	915	x	8
800	16	820	x	910	x	8
800	25	820	x	940	x	8
900	6	920	x	990	x	8
900	10	920	x	1015	x	8
900	16	920	x	1010	x	8
900	25	920	x	1040	x	8
1000	6	1020	x	1090	x	8
1000	10	1020	x	1120	x	8
1000	16	1020	x	1125	x	8
1000	25	1020	x	1150	x	8
1000	40	1020	x	1190	x	8
1100	16	1120	x	1225	x	8
1100	25	1120	x	1260	x	8
1200	25	1220	x	1360	x	8
1200	40	1220	x	1395	x	8
1300		1320	x	1435	x	8
1400	10	1420	x	1545	x	8
1500		1520	x	1645	x	8



## Quality requested by the trained Technicians

Quality for skilled technological progress does not stop in front of the pipe trench. However the stakes of an assembly job of a flange joint are still high. That is why the approved rubber steel gasket concept cannot be matched by alternative products.



# G-ST

## G-ST-Flange Gaskets in special dimensions

Nominal Diameter DN	Dimensions in mm			Nominal Diameter DN	Dimensions in mm			Nominal Diameter DN	Dimensions in mm		
	d <sub>1</sub>	x	d <sub>2</sub> x s <sub>1</sub>		d <sub>1</sub>	x	d <sub>2</sub> x s <sub>1</sub>		d <sub>1</sub>	x	d <sub>2</sub> x s <sub>1</sub>
15	15	x	54 x 3	100	110	x	150 x 4	225	225	x	280 x 5
20	23	x	54 x 3	100	110	x	160 x 10	225	230	x	267 x 5
20	23	x	60 x 3	100	115	x	149 x 4	250	255	x	295 x 4
25	28	x	43 x 3	100	116	x	218 x 5	250	255	x	312 x 5
25	28	x	53 x 3	100	120	x	170 x 5	250	267	x	342 x 6
25	28	x	65 x 3	100	125	x	170 x 4	250	274	x	364 x 6
25	30	x	48 x 4	125	125	x	172 x 5	300	300	x	345 x 6
25	30	x	71 x 4	125	130	x	151 x 4	300	300	x	349 x 6
25	33	x	70 x 3	125	132	x	175 x 5	300	300	x	365 x 6
25	36	x	50 x 5	125	133	x	210 x 5	300	300	x	378 x 5
32	38	x	82 x 4	125	150	x	208 x 5	300	307	x	353 x 5
40	43	x	55 x 3	150	150	x	210 x 5	300	310	x	358 x 8
40	45	x	85 x 4	150	150	x	212 x 5	300	310	x	363 x 5
40	45	x	92 x 4	150	152	x	177 x 5	350	344	x	403 x 6
40	45	x	102 x 4	150	152	x	194 x 3	350	350	x	410 x 7
50	50	x	100 x 8	150	152	x	210 x 3.5	350	350	x	435 x 7
50	52	x	70 x 3	150	154	x	258 x 5	350	370	x	450 x 5
50	52	x	78 x 3	150	156	x	177 x 4	400	400	x	490 x 6
50	55	x	69 x 3	150	158	x	188 x 4	400	400	x	455 x 5
50	55	x	112 x 4	150	159	x	203 x 5	400	420	x	470 x 6
50	57	x	87 x 3	150	160	x	215 x 3.5	450	470	x	570 x 7
50	57	x	95 x 4	150	160	x	247 x 5	450	480	x	574 x 7
50	57	x	118 x 3	150	169	x	203 x 5	450	485	x	535 x 7
50	62	x	118 x 3	150	170	x	195 x 5	450	490	x	540 x 5
50	63	x	75 x 4	150	170	x	285 x 5	500	500	x	580 x 7
65	65	x	85 x 4	150	175	x	228 x 5	500	504	x	542 x 7
65	70	x	107 x 4	175	180	x	240 x 5	500	508	x	585 x 7
65	71	x	91 x 3	175	187	x	238 x 6	500	520	x	585 x 6
65	71	x	137 x 4	175	192	x	228 x 4	500	552	x	625 x 6
80	80	x	104 x 3	190	192	x	277 x 5	550	595	x	643 x 6
80	80	x	118 x 3	190	203	x	239 x 5	600	620	x	710 x 7
80	85	x	147 x 5	200	203	x	273 x 6	600	622	x	674 x 7
80	87	x	105 x 3	200	204	x	305 x 6	650	650	x	710 x 8
80	92	x	124 x 3	200	205	x	270 x 5	650	676	x	736 x 8
80	95	x	121 x 4	200	208	x	242 x 5	650	650	x	810 x 8
80	100	x	148 x 5	200	210	x	258 x 6	700	704	x	746 x 8
100	102	x	138 x 3	200	215	x	270 x 4	700	720	x	895 x 8
100	105	x	127 x 4	200	220	x	259 x 5	800	800	x	840 x 8
100	108	x	149 x 4	200	220	x	309 x 6	950	982	x	1050 x 8
100	108	x	173 x 5	200	225	x	239 x 5				

## G-ST-Flange Gaskets

in special dimensions, to suit pressure class PN 10  
Outer diameter according to DIN 2690, special inner diameter

Nominal Diameter DN	Dimensions in mm			Nominal Diameter DN	Dimensions in mm		
	d <sub>1</sub>	x	d <sub>2</sub> x s <sub>1</sub>		d <sub>1</sub>	x	d <sub>2</sub> x s <sub>1</sub>
25	17	x	70 x 4	300	299	x	378 x 7
40	34	x	92 x 4	350	329	x	438 x 7
50	44	x	107 x 4	400	378	x	490 x 7
65	61	x	127 x 4	500	485	x	595 x 7
80	72	x	142 x 4	600	587	x	695 x 7
100	97	x	162 x 5	700	687	x	810 x 8
125	121	x	192 x 5	800	786	x	915 x 8
150	149	x	218 x 5	900	884	x	1015 x 8
200	196	x	273 x 6	1000	986	x	1120 x 8
250	250	x	328 x 6				



# G-ST/GUSS

## G-ST/GUSS-Flange Gaskets

in special dimensions. For total covering of flange face.

### The right gasket for utility

Flange gaskets for flange joints used in pipeline and facility construction works had been produced to match standards and directives precisely naming dimensions for inner and outer diameter.

The way to determine the inner diameter generally means that due to its size a considerably big partition of the face will not be covered.

#### Typical scenery:

- FFG-Pipe made of ductile cast iron with casted flanges and cement coating according to DIN 28 614, DN 80, PN 10-25

- I/D<sub>pipe</sub> = 78 mm
- O/D<sub>pipe</sub> = 133 mm
- area of flange face = 9.115 mm<sup>2</sup>

- Flange gasket DN 80, PN 10-40 according to DIN EN 1514-1

- I/D<sub>pipe pipe</sub> = 89 mm
- O/D<sub>pipe</sub> = 142 mm
- contact face with O/D<sub>pipe</sub> = 7.672 mm<sup>2</sup>

#### Résumé: approx. 16% of the flange face will not be covered!

Due to insufficient corrosion protection especially to be found in old installations an agglomeration of rust might occur occasionally while dealing with aggressive water quality.

The usage of KROLL & ZILLER-gaskets style **TYP G-ST/GUSS** shoots that problem!

The inner diameter will be determined by the nominal pipe size of commodity pipe and fitting:

Nominal Diameter DN	Nominal Pressure PN	Dimensions in mm				
		d <sub>1</sub>	x	d <sub>2</sub>	x	s <sub>1</sub>
40	10-40	40	x	91	x	4
50	10-40	50	x	106	x	4
60	10-40	60	x	117	x	4
65	10-40	65	x	126	x	4
80	10-40	80	x	142	x	4
100	10-16	100	x	162	x	5
125	10-16	125	x	192	x	5
150	10-16	150	x	218	x	5
200	10-16	200	x	273	x	6
250	10-16	250	x	328	x	6
300	10	300	x	378	x	7
300	16	300	x	384	x	7
350	16	350	x	444	x	7
400	10	400	x	489	x	7
400	16	400	x	495	x	7
500	10	500	x	594	x	7
500	16	500	x	617	x	7

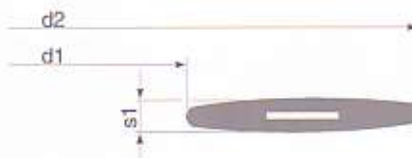


Naturally there are no additional restrictions caused by substitution. Of course the gaskets will be made of NBR-DUO. This material is approved for water and natural gas application (see DVGW or other international documents).

A stressmark is linked to the extended KTW requirements.

The worksheet W 270 "Approval against microbiological disease" is mandatory!

KROLL & ZILLER is again offering the tailor made solution.



# G-ST-P/S

EN 1514-1

DIN 2690

## G-ST-P/S-Profile Gaskets

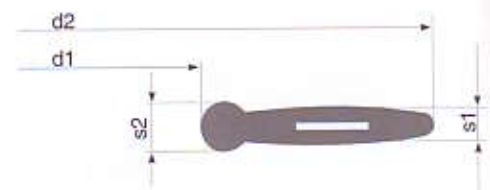


## G-ST-P/S-Profile Gaskets



Nominal Diameter DN	Nominal Pressure PN	Dimensions in mm				
		d <sub>1</sub>	x	d <sub>2</sub>	x	s <sub>1</sub> /s <sub>2</sub>
* 15	10-40	22	x	51	x	3/4
* 20	6	27	x	54	x	3/4
* 20	10-40	27	x	61	x	3/4
* 25	10-40	34	x	71	x	3/4
* 32	6	43	x	76	x	3/4
* 32	10-40	43	x	82	x	3/4
* 40	10-40	49	x	92	x	3/4
* 50	6	61	x	96	x	4/5
* 50	10-40	61	x	107	x	4/5
* 65	6	77	x	116	x	4/5
65	10-40	77	x	127	x	4/5
80	10-40	89	x	142	x	4/5
100	6	115	x	152	x	5/6
100	10-16	115	x	162	x	5/6
100	25-40	115	x	168	x	5/6
125	6	141	x	182	x	5/6
125	10-16	141	x	192	x	5/6
125	25-40	141	x	194	x	5/6
150	6	169	x	207	x	6/8
150	10-16	169	x	218	x	6/8
150	25-40	169	x	224	x	6/8
200	6	220	x	262	x	6/8
200	10-16	220	x	273	x	6/8
200	25	220	x	284	x	6/8
200	40	220	x	290	x	6/8
250	6	273	x	317	x	6/8
250	10	273	x	328	x	6/8
250	16	273	x	329	x	6/8
250	25	273	x	340	x	6/8
250	40	273	x	352	x	6/8
300	6	324	x	373	x	6/8
300	10	324	x	378	x	6/8
300	16	324	x	384	x	6/8
300	25	324	x	400	x	6/8
300	40	324	x	417	x	6/8
350	10	356	x	438	x	7/10
350	16	356	x	444	x	7/10
400	10	407	x	489	x	7/10
400	16	407	x	495	x	7/10
450	10	458	x	539	x	7/10
450	16	458	x	555	x	7/10
500	10	508	x	594	x	7/10
500	16	508	x	617	x	7/10
600	10	610	x	695	x	7/10
600	16	610	x	734	x	7/10
700	10	712	x	810	x	8/11
700	16	712	x	804	x	8/11
800	10	813	x	917	x	8/11
800	16	813	x	911	x	8/11
900	10	915	x	1017	x	8/11
900	16	915	x	1011	x	8/11
1000	10	1016	x	1124	x	8/11
1000	16	1016	x	1128	x	8/11
1200	2.5	1220	x	1290	x	8/11
1200	6	1220	x	1307	x	8/11
1200	10	1220	x	1341	x	8/11
1200	16	1220	x	1342	x	8/11
1400	2.5	1420	x	1490	x	8/11

Nominal Diameter DN	Nominal Pressure PN	Dimensions in mm				
		d <sub>1</sub>	x	d <sub>2</sub>	x	s <sub>1</sub> /s <sub>2</sub>
350	6	368	x	423	x	7/10
350	10	368	x	438	x	7/10
350	16	368	x	445	x	7/10
350	25	368	x	458	x	7/10
350	40	368	x	475	x	7/10
400	6	420	x	473	x	7/10
400	10	420	x	490	x	7/10
400	16	420	x	497	x	7/10
400	25	420	x	515	x	7/10
400	40	420	x	547	x	7/10
450	6	470	x	528	x	7/10
450	10	470	x	540	x	7/10
450	16	470	x	557	x	7/10
450	25	470	x	565	x	7/10
450	40	470	x	572	x	7/10
500	6	520	x	578	x	7/10
500	10	520	x	595	x	7/10
500	16	520	x	618	x	7/10
500	25	520	x	625	x	7/10
500	40	520	x	628	x	7/10
600	6	620	x	680	x	7/10
600	10	620	x	695	x	7/10
600	16	620	x	735	x	7/10
600	25	620	x	730	x	7/10
600	40	620	x	745	x	7/10
700	6	720	x	785	x	8/11
700	10	720	x	810	x	8/11
700	16	720	x	805	x	8/11
700	25	720	x	830	x	8/11
700	40	720	x	850	x	8/11
800	6	820	x	890	x	8/11
800	10	820	x	915	x	8/11
800	16	820	x	910	x	8/11
800	25	820	x	940	x	8/11
800	40	820	x	970	x	8/11
900	6	920	x	990	x	8/11
900	10	920	x	1015	x	8/11
900	16	920	x	1010	x	8/11
900	25	920	x	1040	x	8/11
900	40	920	x	1080	x	8/11
1000	6	1020	x	1090	x	8/11
1000	10	1020	x	1120	x	8/11
1000	16	1020	x	1125	x	8/11
1000	40	1020	x	1190	x	8/11
1100		1120	x	1215	x	8/11
1200		1215	x	1285	x	5.5/7
1200	40	1220	x	1395	x	8/11
1200		1280	x	1380	x	8/11
1400		1454	x	1540	x	8/11



## G-ST-P/S-Profile Gaskets



Nominal Pipe Size NPS	Dimensions in mm Pressure Class 150 lbs			Dimensions in mm Pressure Class 300 lbs			Nominal Pipe Size NPS	Dimensions in mm Pressure Class 150 lbs			Dimensions in mm Pressure Class 300 lbs		
	d <sub>1</sub>	d <sub>2</sub>	s <sub>1</sub> /s <sub>2</sub>	d <sub>1</sub>	d <sub>2</sub>	s <sub>1</sub> /s <sub>2</sub>		d <sub>1</sub>	d <sub>2</sub>	s <sub>1</sub> /s <sub>2</sub>	d <sub>1</sub>	d <sub>2</sub>	s <sub>1</sub> /s <sub>2</sub>
1/2"	21	45	3/4	20	51	3/4	24"	610	715	7/10	610	772	7/10
3/4"	27	54	3/4	27	64	3/4	26"	665	771	7/10	665	832	7/10
1"	33	64	3/4	33	70	3/4	28"	720	829	8/11	720	895	8/11
1 1/4"	42	73	3/4	42	80	3/4	30"	770	880	8/11	770	949	8/11
1 1/2"	48	83	3/4	48	92	3/4	32"	820	937	8/11	820	1003	8/11
2"	60	102	4/5	60	108	4/5	34"	865	987	8/11	865	1054	8/11
2 1/2"	73	121	4/5	73	127	4/5	36"	920	1045	8/11	920	1114	8/11
3"	89	133	4/5	89	146	4/5	38"	965	1108	8/11	965	1051	8/11
3 1/2"	102	159	4/5	102	162	4/5	40"	1020	1159	8/11	1020	1111	8/11
4"	115	171	5/6	115	178	5/6	42"	1070	1216	8/11	1070	1162	8/11
5"	140	193	5/6	140	213	5/6	44"	1120	1273	8/11	1120	1216	8/11
6"	168	219	6/8	168	247	6/8	46"	1170	1324	8/11	1170	1270	8/11
8"	219	276	6/8	219	305	6/8	48"	1220	1381	8/11	1220	1321	8/11
10"	273	337	6/8	273	359	6/8	50"	1270	1432	8/11	1270	1375	8/11
12"	325	406	6/8	325	419	6/8	52"	1320	1489	8/11	1320	1425	8/11
14"	356	448	7/10	356	482	7/10	54"	1370	1546	8/11	1370	1489	8/11
16"	406	512	7/10	406	537	7/10	56"	1430	1603	8/11	1430	1540	8/11
18"	457	547	7/10	457	594	7/10	58"	1120	1273	8/11	1475	1590	8/11
20"	508	604	7/10	508	651	7/10	60"	1530	1711	8/11	1530	1641	8/11

## G-ST-P/S-Profile Gaskets

special dimensions

## G-ST-P/S



Nominal Diameter DN	Dimensions in mm			Nominal Diameter DN	Dimensions in mm		
	d <sub>1</sub>	d <sub>2</sub>	s <sub>1</sub>		d <sub>1</sub>	d <sub>2</sub>	s <sub>1</sub>
40	38	92	3/4	300	300	378	6/8
50	50	107	4/5	350	285	438	7/10
65	66	127	4/5	350	330	438	7/10
80	76	142	4/5	350	340	490	7/10
80	81	142	4/5	350	340	617	7/10
80	84	133	4/5	350	396	444	6/8
100	100	162	4/5	400	372	490	7/10
125	125	192	5/6	400	324	490	7/10
150	150	218	5/6	400	400	490	7/10
150	156	218	6/8	500	465	595	7/10
150	144	218	6/8	600	586	695	7/10
175	175	235	6/8	600	630	680	7/10
200	182	275	6/8	700	661	810	8/11
200	200	273	6/8	700	690	755	8/11
250	228	328	6/8	800	749	915	8/11
250	250	328	6/8				
300	275	378	6/8				

## G-ST-P/S-Profile Gaskets

Dimensions for flanges of VCI-tanks,  
in accordance with code of practice C2.1.1

Nominal Diameter DN	Dimensions in mm		
	d <sub>1</sub>	d <sub>2</sub>	s <sub>1</sub>
500	510	577	7/10
600	610	677	7/10
600	610	717	7/10
700	710	782	8/11
800	810	887	8/11



## G-ST-P/K to suit flange joints made of thermoplastics (PVC, PP, PE, PVDF)

### Type A

For pressure pipelines made of PVC with solvent cemented flange adaptors and backing flanges, manufactured in accordance with DIN 8063 part 4, and also for pressure pipelines made of PE, PP and PVDF with electrofused flange adaptors and backing flanges manufactured in accordance with DIN 16962 part 12 (PP) and DIN 16963 part 11 (PE), also usable for fixed flanges made of PVC, PP and PVDF. Can also be used for intermediate flange valves. Dimensions according to DIN ISO 2501 PN 10.

Flange DN <sup>1)</sup>	Outer Ø of pipe		Dimensions mm		
	(mm)		d <sub>1</sub>	d <sub>2</sub>	s <sub>1</sub> /s <sub>2</sub>
10	16		16	46	3 / 4
15	20		20	51	3 / 4
20	25		25	61	3 / 4
25	32		32	71	3 / 4
32	40		40	82	3 / 4
40	50		50	92	3 / 4
50	63		63	107	4 / 5
65	75		75	127	4 / 5
80	90		90	142	4 / 5
100	110		110	162	5 / 6
125	125		125	192	5 / 6
125	140		140	192	5 / 6
150	160		160	218	6 / 8
200	200		200	273	6 / 8
200	225		225	273	6 / 8
250	250		250	303	6 / 8
250	250		250	328	6 / 8
250	280		280	328	6 / 8
300	315		315	378	6 / 8
350	355		355	438	7 / 10
400	400		400	489	7 / 10

DIN / ISO (PVDF)

## G-ST-P/K-Profile Gaskets

For pressure pipelines made of PVDF with butt-fused flange adaptors and backing flanges. Flange dimensions according to DIN ISO 2501 PN 10.

Flange DN <sup>1)</sup>	Outer Ø of pipe			Dimensions in mm		
	PN	(mm)	SDR <sup>2)</sup>	d <sub>1</sub>	d <sub>2</sub>	s <sub>1</sub> /s <sub>2</sub>
20	16	25	21	24	61	3 / 4
25	16	32	21	30	71	3 / 4
32	16	40	21	37	82	3 / 4
40	16	50	21	46	92	3 / 4
50	16	63	21	61	107	4 / 5
65	16	75	21	73	127	4 / 5
65	10	75	33	69	127	4 / 5
80	10-16	90	33	84	142	4 / 5
100	16	110	21	104	162	5 / 6
100	10	125	33	123	162	5 / 6
125	10	140	33	137	192	5 / 6
125	16	140	21	127	192	5 / 6
150	10	160	33	156	218	6 / 8
150	16	160	21	146	218	6 / 8
150	10	180	33	177	218	6 / 8
200	10	200	33	196	273	6 / 8
200	16	200	21	181	273	6 / 8
200	10	225	33	220	273	6 / 8
200	16	225	21	203	273	6 / 8
250	10	280	33	274	328	6 / 8





# G-ST-P/K

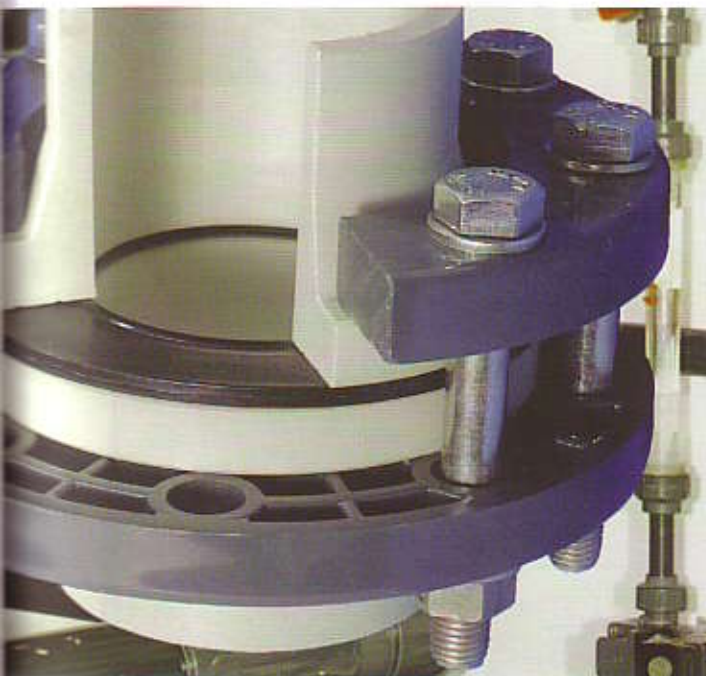
DIN 16962 part 4 (PP)  
DIN 16963 part 4 (PE)

## G-ST-P/K Profile Gaskets



For pressure pipelines made of PE and PP with butt-fused flange adaptors and backing flanges to suit DIN 16962 part 4 (PP) and DIN 16963 part 4 (PE). Flange dimensions according to DIN ISO 2501 PN10.

Flange DN <sup>1)</sup>	Outer Ø of pipe (mm)	SDR <sup>2)</sup>	Dimensions in mm		
			d <sub>1</sub>	x d <sub>2</sub>	x s <sub>1</sub> /s <sub>2</sub>
20	25	11	22	x 61	x 3 / 4
20	25	7.4	24	x 61	x 3 / 4
25	32	11	28	x 71	x 3 / 4
25	32	7.4	23	x 71	x 3 / 4
32	40	11	34	x 82	x 3 / 4
32	40	7.4	29	x 82	x 3 / 4
40	50	17	46	x 92	x 3 / 4
40	50	11	42	x 92	x 3 / 4
40	50	7.4	36	x 92	x 3 / 4
50	63	17	58	x 107	x 4 / 5
50	63	11	53	x 107	x 4 / 5
50	63	7.4	45	x 107	x 4 / 5
65	75	17	69	x 127	x 4 / 5
65	75	11	63	x 127	x 4 / 5
65	75	7.4	54	x 127	x 4 / 5
80	90	17	84	x 142	x 4 / 5
80	90	11	76	x 142	x 4 / 5
80	90	7.4	65	x 142	x 4 / 5
100	110	33	104	x 162	x 5 / 6
100	110	17	100	x 162	x 5 / 6
100	110	11	93	x 162	x 5 / 6
100	110	7.4	80	x 162	x 5 / 6
100	125	33	123	x 162	x 5 / 6
100	125	17	114	x 162	x 5 / 6
100	125	11	105	x 162	x 5 / 6
100	125	7.4	90	x 162	x 5 / 6
125	140	33	137	x 192	x 5 / 6
125	140	17	127	x 192	x 5 / 6
125	140	11	117	x 192	x 5 / 6



DIN 16962 part 4 (PP)  
DIN 16963 part 4 (PE)

## G-ST-P/K Profile Gaskets

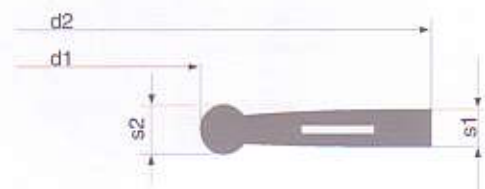


For pressure pipelines made of PE and PP with butt-fused flange adaptors and backing flanges to suit DIN 16962 part 4 (PP) and DIN 16963 part 4 (PE).

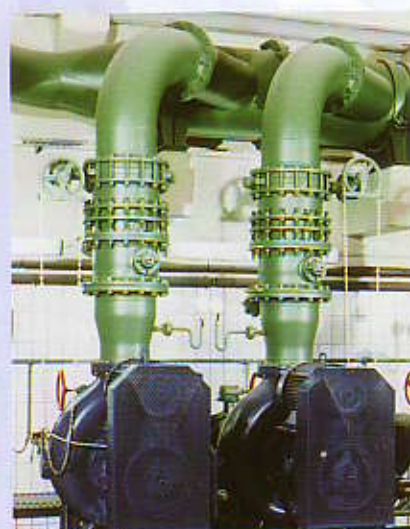
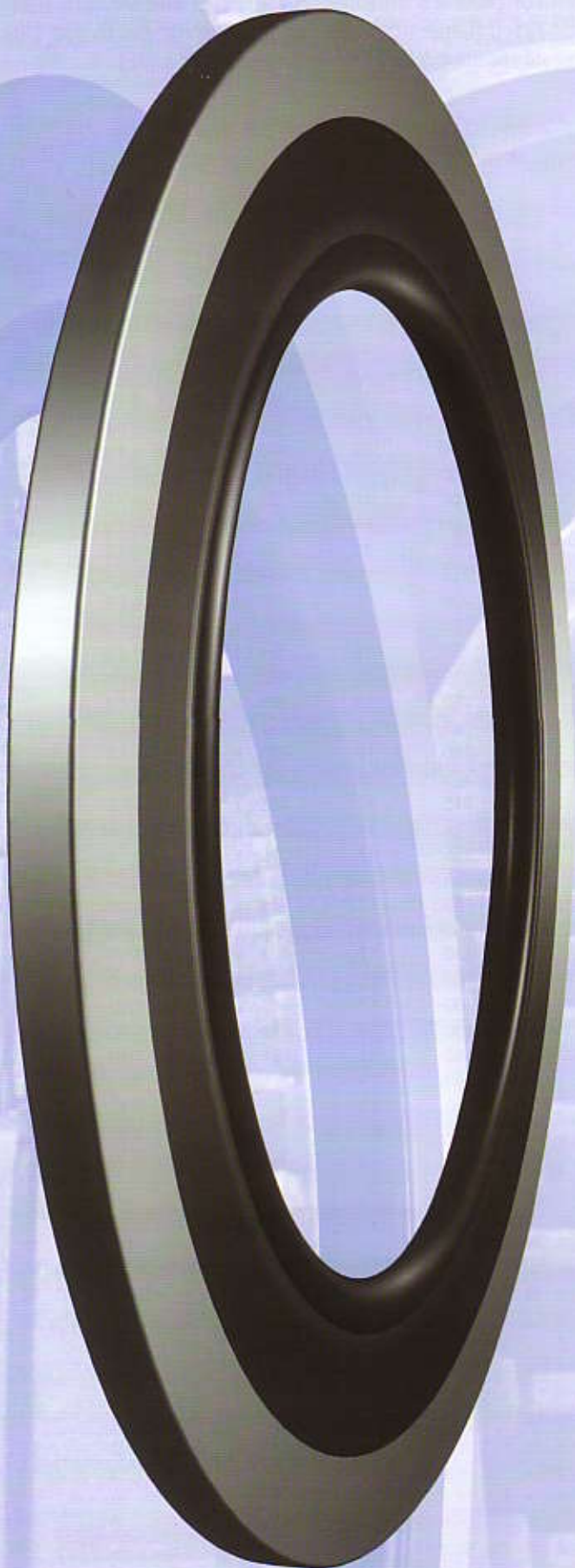
Flange DN <sup>1)</sup>	Outer Ø of pipe (mm)	SDR <sup>2)</sup>	Dimensions in mm		
			d <sub>1</sub>	x d <sub>2</sub>	x s <sub>1</sub> /s <sub>2</sub>
125	140	7.4	101	x 192	x 5 / 6
150	160	33	156	x 218	x 6 / 8
150	160	17	146	x 218	x 6 / 8
150	160	11	135	x 218	x 6 / 8
150	160	7.4	116	x 218	x 6 / 8
150	180	33	177	x 218	x 6 / 8
150	180	17	164	x 218	x 6 / 8
150	180	11	151	x 218	x 6 / 8
150	180	7.4	130	x 218	x 6 / 8
200	200	33	196	x 273	x 6 / 8
200	200	17	181	x 273	x 6 / 8
200	200	11	168	x 273	x 6 / 8
200	200	7.4	145	x 273	x 6 / 8
200	225	33	220	x 273	x 6 / 8
200	225	17	203	x 273	x 6 / 8
200	225	11	188	x 273	x 6 / 8
250	250	33	243	x 328	x 6 / 8
250	250	17	226	x 328	x 6 / 8
250	250	11	208	x 328	x 6 / 8
250	280	33	274	x 328	x 6 / 8
250	280	17	252	x 328	x 6 / 8
250	280	11	233	x 328	x 6 / 8
300	315	33	306	x 378	x 6 / 8
300	315	17	283	x 378	x 6 / 8
300	315	11	262	x 378	x 6 / 8
350	355	17	319	x 435	x 6 / 8
350	355	11	294	x 438	x 6 / 8
400	400	17	359	x 489	x 6 / 8
400	400	11	331	x 489	x 6 / 8
500	450	17	403	x 594	x 7/10
500	450	11	372	x 594	x 7/10
500	500	17	447	x 594	x 7/10
500	500	11	413	x 594	x 7/10
600	560	17	494	x 695	x 7/10
600	560	11	462	x 695	x 7/10
600	560	11	451	x 695	x 7/10
600	630	17	555	x 695	x 7/10
600	630	11	519	x 695	x 7/10

<sup>1)</sup>Nominal flange size may not be similar to nominal pipe size.

<sup>2)</sup>SDR = Standard Dimension Ratio (ratio between outer Ø of pipe / wall thickness)



## G-ST-P/KN for non-load bearing flange joints



## G-ST-P/KN for non-load bearing flange joints

### The successful merging of two opposing sealing philosophies.

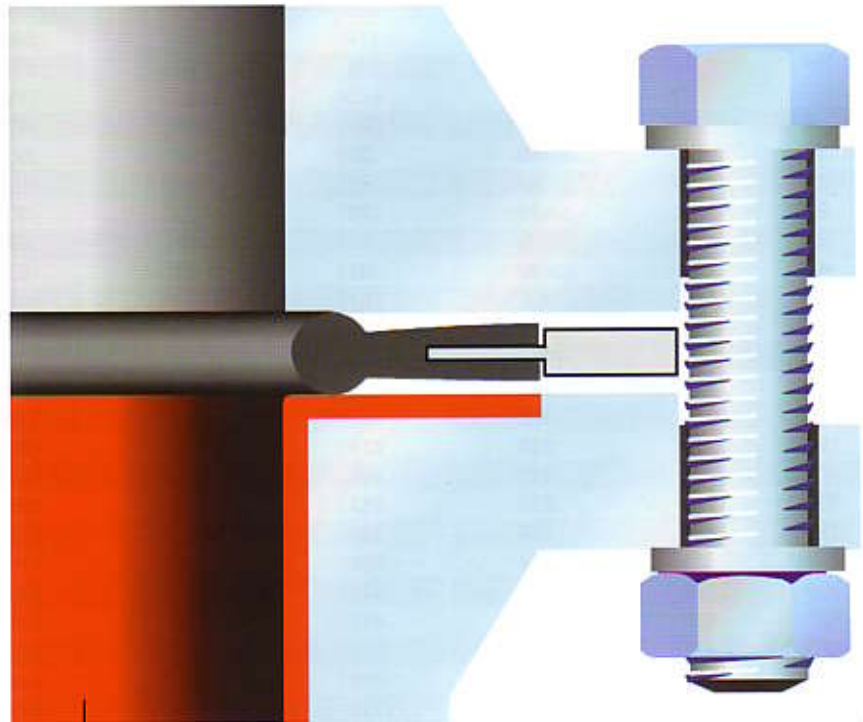
The G-ST profile gasket exhibits deforming and molding characteristics with minimum surface pressure.

When extreme stresses occur during installation, the G-ST-P/KN offers the best solution.

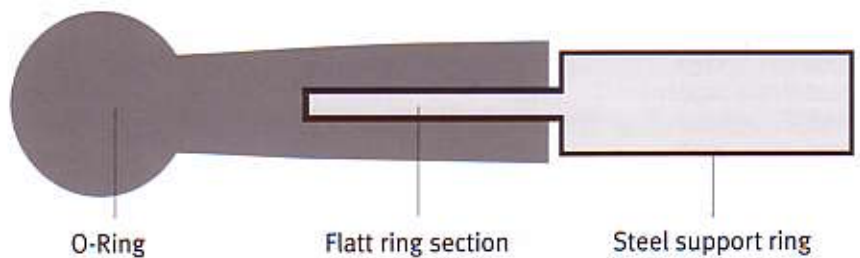
The outer steel ring on the outside boxes in the surface lip and protects it fully.

High surface pressures on the rubber lip or blow-outs under high operating pressure are not possible. In the case of partcoated flanges the sensitive faces are protected. Typical applications are therefore:

Systems operating at high pressure or Rubber-coated sub-assemblies in chemical works and power stations.



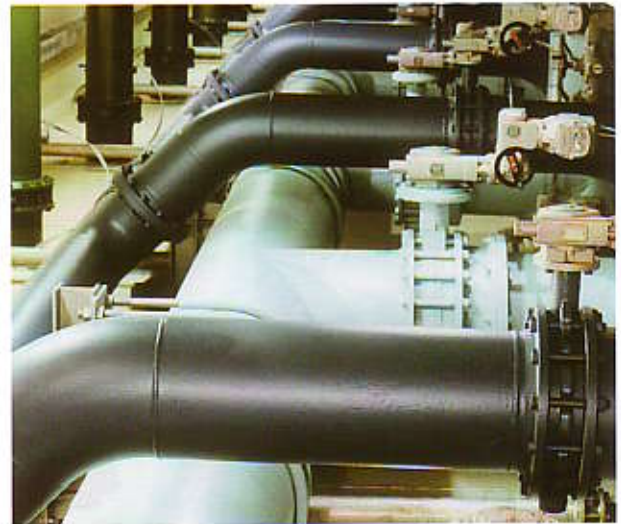
Soft rubber



O-Ring

Flatt ring section

Steel support ring



# G-ST-P/KN

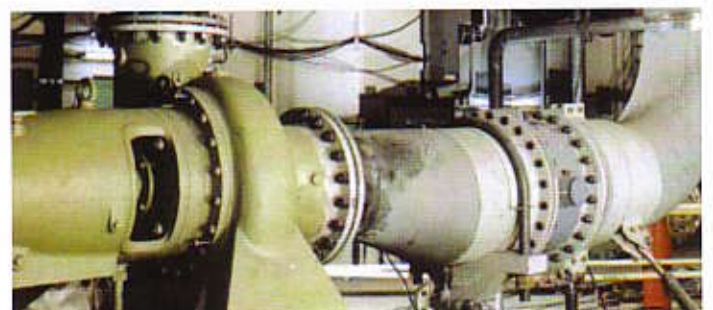
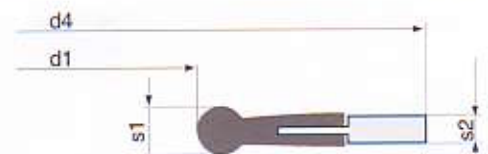
DIN 2690  
G-ST-P/KN

G-ST-P/KN for non-load bearing  
flange joints



PN 10 - PN 100  
Dimensions in mm

	PN	10	16	25	40	64	100	
DN	d <sub>1</sub>	d <sub>4</sub>	d <sub>4</sub>	d <sub>4</sub>	d <sub>4</sub>	d <sub>4</sub>	d <sub>4</sub>	s <sub>1</sub> /s <sub>2</sub>
10	18	45	45	45	45	56	56	5 / 3
15	22	50	50	50	50	61	61	5 / 3
20	28	60	60	60	60			5 / 3
25	35	70	70	70	70	82	82	5.5/3.5
32	43	82	82	82	82			5.5/3.5
40	49	92	92	92	92	103	103	5.5/3.5
50	61	107	107	107	107	113	119	5.5/3.5
65	77	127	127	127	127	137	143	5.5/3.5
80	90	142	142	142	142	148	154	5.5/3.5
100	115	162	162	168	168	174	180	8 / 5
125	141	192	192	195	195	210	217	8 / 5
150	169	218	218	225	225	247	257	8 / 5
175	195	248	248	255	267	277	287	8 / 5
200	220	273	273	285	292	309	323	8 / 5
250	274	328	330	342	353	364	391	8 / 5
300	325	378	385	402	418	424	458	8 / 5
350	368	438	445	458	475	486	512	8 / 5
400	420	490	497	515	547	543	572	8 / 5
450	470	540	557	565	572			10/6.5
500	520	595	618	625	628	657	704	10/6.5
600	620	695	735	730	745	764	813	10/6.5
700	720	810	805	830	850	879	950	10/6.5
800	820	915	910	940	970	988		10/6.5
900	920	1015	1010	1040	1080	1108		10/6.5
1000	1020	1120	1125	1150	1190	1220		10/6.5
1200	1220	1340	1340	1360	1395	1452		10/6.5
1400	1420	1545	1540	1575	1615			12 / 8
1600	1620	1770	1760	1795	1830			12 / 8
1800	1820	1970	1960	2000				12 / 8
2000	2020	2180	2165	2230				12 / 8
2200	2220	2380	2375					12 / 8
2400	2420	2590	2585					12 / 8
2600	2620	2790	2785					12 / 8
2800	2820	3010						12 / 8
3000	3020	3225						12 / 8



# G-ST-P/KN

similar to ASME B 16.21 for ASME B 16.47 Series A flanges  
(previous MSS SP - 44)

G-ST-P/KN for non-load bearing  
flange joints



Class 150 lbs - 600 lbs  
Dimensions in mm

NPS	Class					s <sub>1</sub> /s <sub>2</sub>
	150	300	400	600	600	
	d <sub>1</sub>	d <sub>4</sub>	d <sub>4</sub>	d <sub>4</sub>	d <sub>4</sub>	
26"	665	771	832	829	864	10/6.5
28"	720	829	895	889	911	10/6.5
30"	770	880	949	943	968	10/6.5
32"	820	937	1003	1000	1019	10/6.5
34"	865	987	1054	1051	1070	10/6.5
36"	920	1045	1114	1114	1127	10/6.5
38"	965	1108	1051	1070	1102	10/6.5
40"	1020	1159	1111	1124	1152	10/6.5
42"	1070	1216	1162	1175	1216	10/6.5
44"	1120	1273	1216	1229	1267	10/6.5
46"	1170	1324	1270	1286	1324	10/6.5
48"	1220	1381	1321	1343	1387	10/6.5
50"	1270	1432	1375	1400	1445	12/8
52"	1320	1489	1425	1451	1495	12/8
54"	1370	1546	1489	1515	1552	12/8
56"	1430	1603	1540	1565	1610	12/8
58"	1475	1660	1590	1616	1660	12/8
60"	1530	1711	1641	1680	1730	12/8

# G-ST-P/KN

similar to ASME B 16.21 for ASME B 16.47 Series B flanges  
(previous API 605)

G-ST-P/KN for non-load bearing  
flange joints



Class 150 lbs - 600 lbs  
Dimensions in mm

NPS	Class					s <sub>1</sub> /s <sub>2</sub>
	150	300	400	600	600	
	d <sub>1</sub>	d <sub>4</sub>	d <sub>4</sub>	d <sub>4</sub>	d <sub>4</sub>	
26"	665	725	771	746	765	10/6.5
28"	720	776	825	800	819	10/6.5
30"	770	827	886	857	879	10/6.5
32"	820	881	939	911	933	10/6.5
34"	865	935	993	962	997	10/6.5
36"	920	987	1047	1022	1047	10/6.5
38"	965	1044	1098			10/6.5
40"	1020	1095	1149			10/6.5
42"	1070	1146	1200			10/6.5
44"	1120	1196	1251			10/6.5
46"	1170	1255	1317			10/6.5
48"	1220	1306	1368			10/6.5
50"	1270	1357	1419			12/8
52"	1320	1408	1470			12/8
54"	1370	1463	1555			12/8
56"	1430	1514	1593			12/8
58"	1475	1579	1655			12/8
60"	1530	1630	1704			12/8

# G-ST-P/KN

similar to ASME B 16.21 for ASME B 16.5 flanges

G-ST-P/KN for non-load bearing flange joints



Class 150 lbs - 900 lbs  
Dimensions in mm

NPS	Class						$s_1/s_2$
	150	300	400	600	900		
	$d_1$	$d_4$	$d_4$	$d_4$	$d_4$	$d_4$	
1/2"	16	45	51	51	51	61	5 / 3
3/4"	22	54	64	64	64	67	5 / 3
1"	28	64	70	70	70	76	5 / 3
1 1/4"	35	73	80	80	80	86	5.5/3.5
1 1/2"	43	83	93	93	93	95	5.5/3.5
2"	61	102	108	108	108	140	5.5/3.5
2 1/2"	77	121	127	127	127	162	5.5/3.5
3"	90	134	146	146	146	165	5.5/3.5
3 1/2"	102	159	162	159	159		8 / 5
4"	115	172	178	175	191	203	8 / 5
5"	141	194	213	210	238	245	8 / 5
6"	169	220	248	245	264	286	8 / 5
8"	220	277	305	302	318	356	8 / 5
10"	274	337	359	356	397	432	8 / 5
12"	325	407	419	416	454	496	8 / 5
14"	368	448	483	480	489	518	8 / 5
16"	420	512	537	534	562	572	8 / 5
18"	470	547	594	591	610	635	10/6.5
20"	520	604	651	645	680	696	10/6.5
24"	620	715	772	766	788	835	10/6.5

## Available materials

EPDM

NBR-DUO

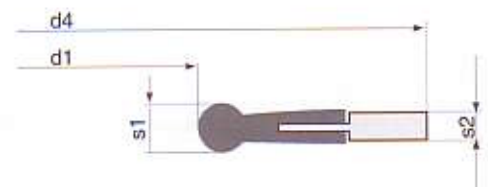
FPM-S

## Thrust Ring

Stainless Steel  
1.4301 / AISI 304

Low Carbon Steel  
1.0038 / St 37  
zincplated and galvanized

other materials on request



# G-ST-P/HTB

VP 401/DIN EN 682  
G-ST-P/HTB

## G-ST-Profile Gaskets

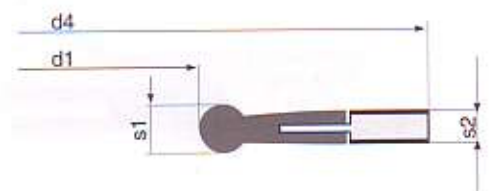
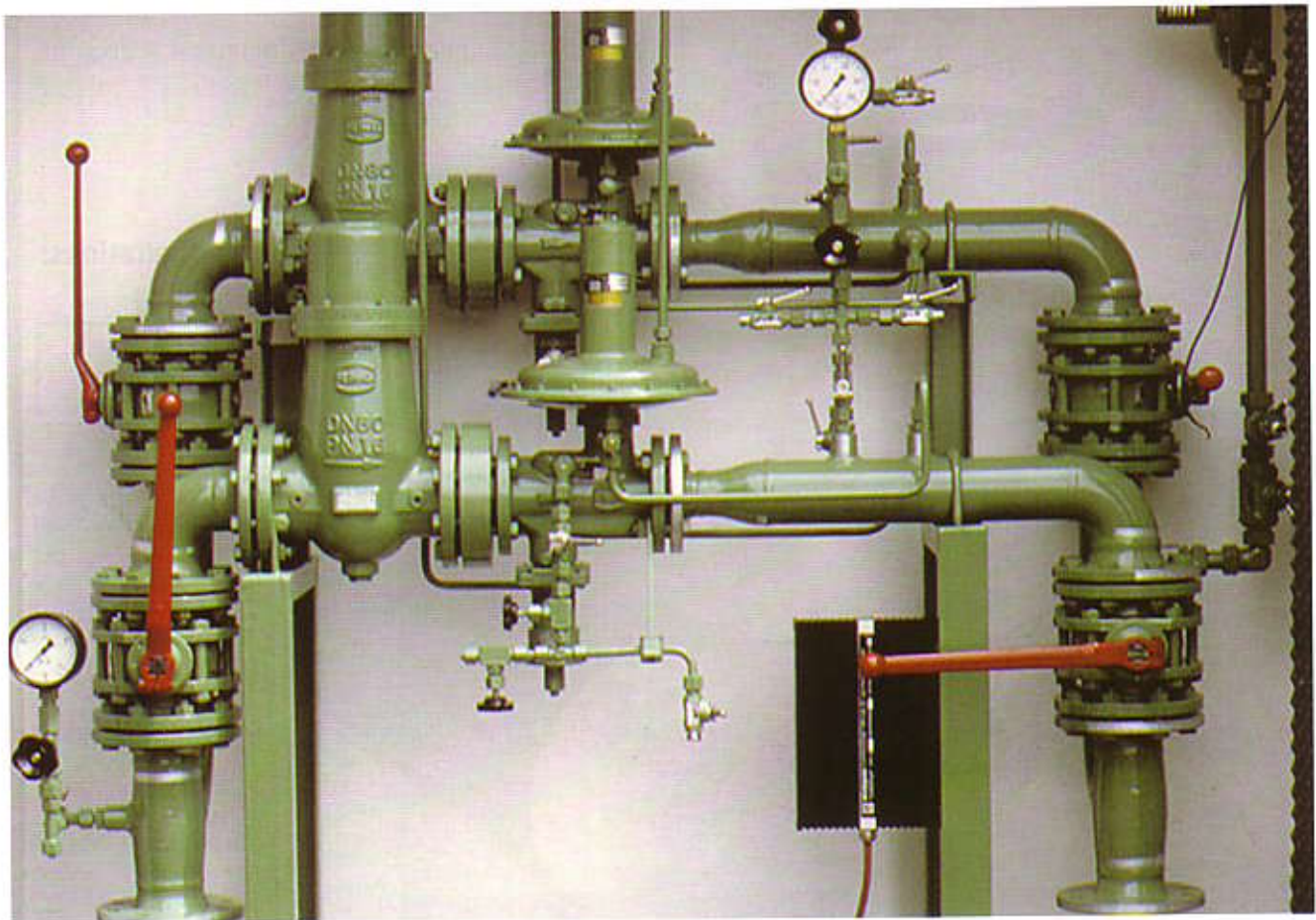


Designed for steel flange joints in Fire – Safe pipesystems as well as connected fire fighting systems.

DVGW approved up to 5 bar  
according to VP 401

Thrust ring style "Kammprofil", 1.4571/AISI 316 Ti, 0.5mm layers of expanded graphite on both faces. Sealing lip made of NBR-DUO.

Nominal Diameter DN	Nominal Pressure Class PN	Dimensions in mm				
		d <sub>1</sub>	x	d <sub>2</sub>	x	s <sub>1</sub> /s <sub>2</sub>
25	10-40	34	x	71	x	5.5/4.5
32	10-40	43	x	82	x	5.5/4.5
40	10-40	49	x	92	x	5.5/4.5
50	10-40	61	x	107	x	5.5/4.5
65	10-40	77	x	127	x	5.5/4.5
80	10-40	89	x	142	x	5.5/4.5
100	10-16	115	x	162	x	8/6
125	10-16	141	x	192	x	8/6
150	10-16	169	x	218	x	8/6
200	10-16	220	x	273	x	8/6
200	25	220	x	284	x	8/6
250	16	273	x	329	x	8/6



# G-ST-P/OE

## G-ST-P/OE-Profile Gaskets

Profiles available currently

G-ST-P/OE



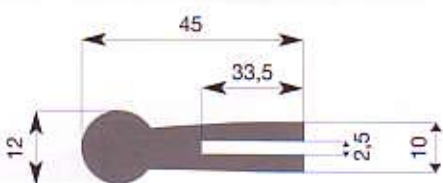
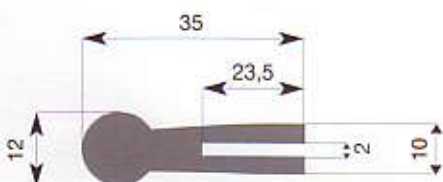
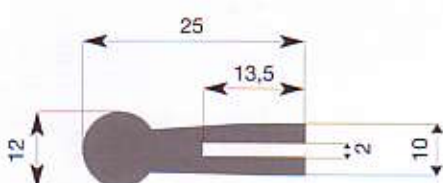
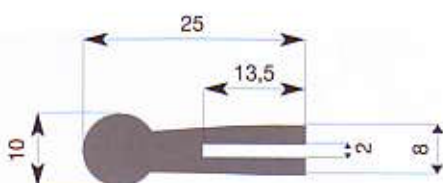
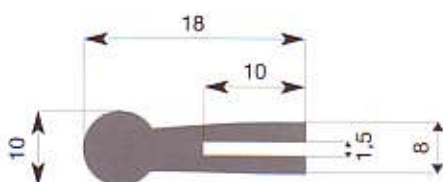
Due to their innovative design, profile gaskets are the first choice to provide reliable sealing for flange joints with low static capacity.

For example, the construction of an apparatus and containers will often combine slim flange faces with a small amount of bolts.

Those and similar applications are perfectly covered by the type G-ST-P/OE.

We will match your request through the right combination of elastomer lips and stainless steel inserts.

### Profiles



### Available rubber lips

others on request

### Available materials

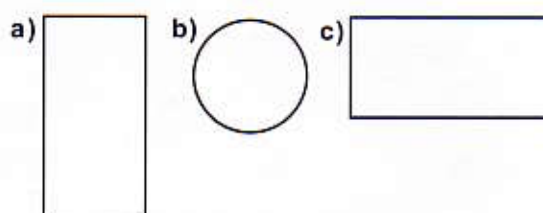
EPDM NBR-DUO FPM-S

### Steel insert made of 1.4301/AISI 304

Others on request

Minimum inner diameter = 200 mm

### Examples for possible configurations:



others on request



# G-ST-P/GR

## G-ST-P/GR-Profile Gaskets

in accordance with directive FDG - 0389  
to suit flange joints with soft/hard rubber lining.

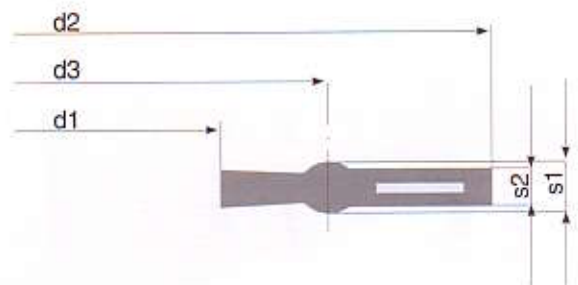
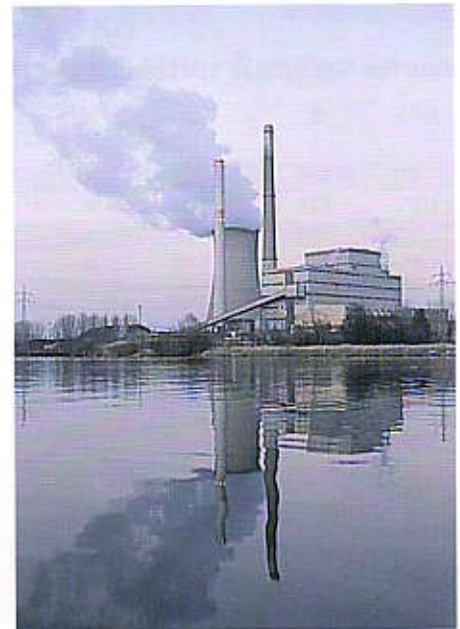
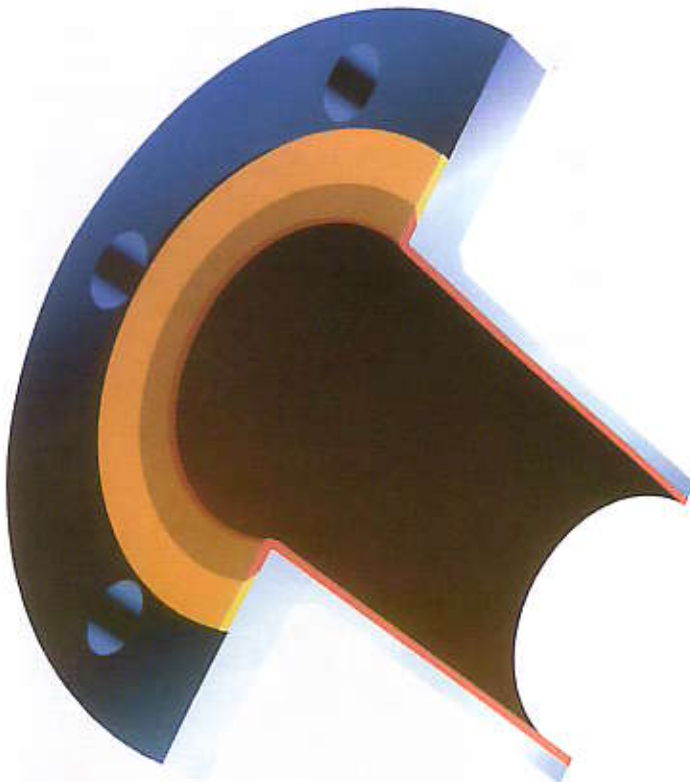
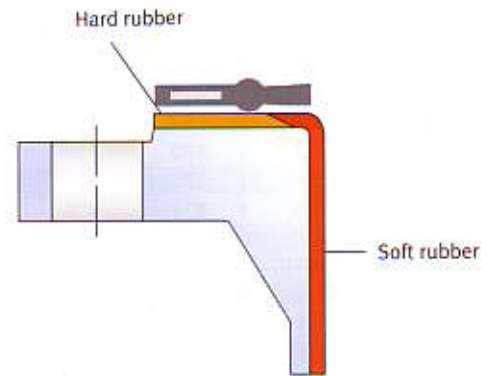
G-ST-P/GR



Nominal Diameter

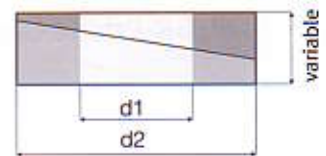
Dimensions in mm

DN	d <sub>1</sub>	x	d <sub>2</sub>	x	d <sub>3</sub>	x	s <sub>1</sub>	/	s <sub>2</sub>
25	28	x	74	x	54	x	3.5	/	3
32	37	x	85	x	64	x	3.5	/	3
40	43	x	95	x	70	x	3.5	/	3
50	54	x	110	x	82	x	4.5	/	4
65	70	x	130	x	102	x	4.5	/	4
80	82	x	145	x	114	x	4.5	/	4
100	107	x	165	x	140	x	4.5	/	4
125	132	x	195	x	163	x	5.5	/	5
150	159	x	221	x	192	x	5.5	/	5
200	207	x	276	x	240	x	5.5	/	5
250	260	x	330	x	293	x	5.5	/	5
300	310	x	380	x	342	x	5.5	/	5
350	341	x	440	x	373	x	8	/	7
400	392	x	491	x	430	x	8	/	7
500	494	x	596	x	532	x	8	/	7
600	595	x	698	x	635	x	8	/	7
700	695	x	813	x	735	x	9	/	8
800	800	x	920	x	840	x	9	/	8
900	895	x	1020	x	940	x	9	/	8
1000	1000	x	1127	x	1040	x	9	/	8
1200	1200	x	1344	x	1245	x	9	/	8



# G-ST-Wedge Ring

Outer diameter according to  
DIN 2632, ASME B 16.5



Nominal Diameter		Dimensions in mm					weight
DN	d <sub>2</sub>	x	d <sub>1</sub>	x	s at 0°	s at 8°	kg
40	89	x	45	x	23	29	0.6
50	102	x	58	x	24	31	0.8
65	127	x	71	x	25	34	1.4
80	142	x	89	x	27	37	1.7
100	162	x	108	x	27	38	2.0
125	192	x	133	x	30	43	3.2
150	218	x	163	x	33	48	4.1
200	273	x	216	x	37	56	5.4
250	328	x	267	x	41	64	7.7
300	378	x	318	x	45	71	9.7
350	438	x	368	x	53	84	17.6
400	490	x	420	x	57	91	19.3
500	595	x	520	x	66	108	32.1
600	674	x	622	x	73	120	40.3
700	810	x	710	x	84	141	76.0
800	917	x	808	x	92	156	99.0
900	1015	x	910	x	100	171	121.0
1000	1120	x	1015	x	111	189	130.0
1200	1340	x	1210		on request	on request	

## The quick answer to sealing problems

The Kroll & Ziller G-ST wedge ring is ideally suited for solving alignment problems during assembly or for filling large gaps in installation. The shell structure with inner elastomeric flat gasket - combined into one unit with pins - provides the possibility to solve misalignments from 0° to 8° without steps.

The ideal combination with G-ST-P gaskets is approved for gas and drinking water and is a must for the practical engineer.

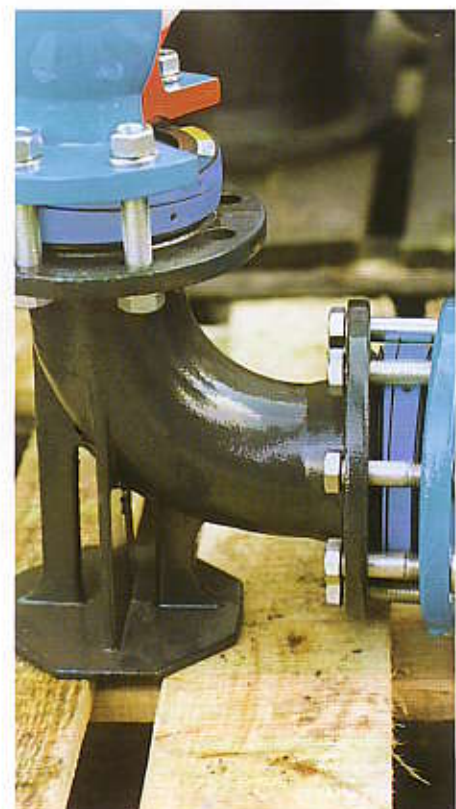
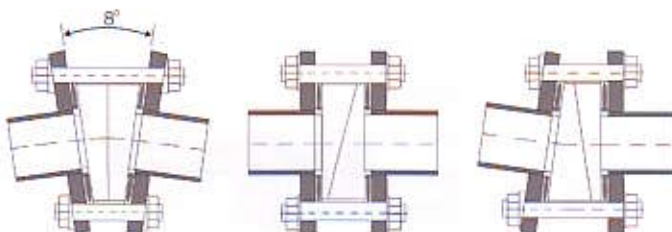
Time is saved during assembly and flanges can be reliably sealed for service.



Nominal Pipe Size		Dimensions in mm					weight
NPS	d <sub>2</sub>	x	d <sub>1</sub>	x	s at 0°	s at 8°	kg
2"	102	x	55	x	24	31	0.92
2 1/2"	121	x	68	x	27	35	1.39
3"	133	x	84	x	28	37	1.54
4"	171	x	110	x	29	41	2.61
6"	219	x	163	x	35	50	3.89
8"	276	x	214	x	39	58	6.16
10"	337	x	268	x	43	67	9.50
12"	406	x	320	x	49	77	15.90



Material: Carbon steel (1.0037), galvanized, electro-coated with epoxy polyester powder coating (potable water approval), colour acc. to RAL 5010, blue.



# The companies within the ZILLER-Group



## NILOS® HANS ZILLER GMBH & CO. KG Conveyor belt - equipment

Conveyor belts and connections, vulcanising equipment, cold bonding adhesives TOPGUM, NILOS friction, reflex and wear protection coatings, knife-cleaning devices, moulded articles, sieve floors, sieve machines with new processing technology, planning and supply of complete conveyor belt repair workshops.



## ZILLER GMBH & CO. KG Roller bearing gaskets

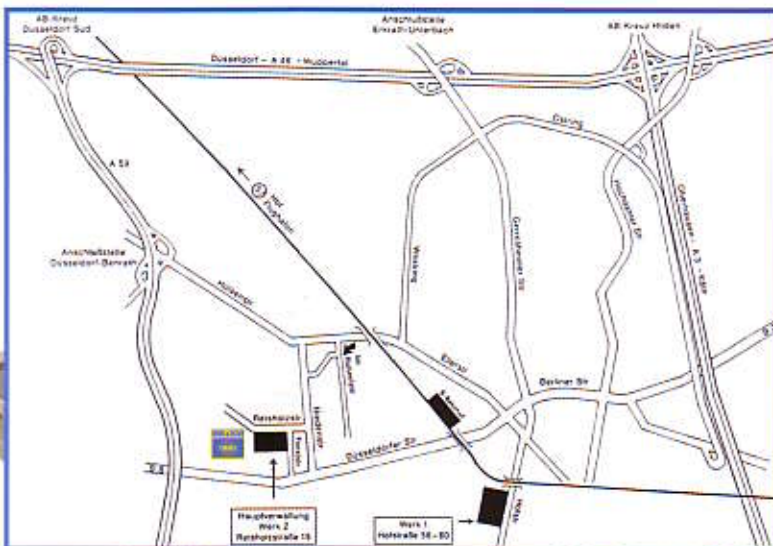
NILOS rings for ball and roller bearings, Z and RS bearings, labyrinth gaskets NILOS ring LSTO, spacer rings.



## KROLL & ZILLER GMBH & CO. KG G-ST flange and profile gaskets, other flange gaskets and packings

Ask for the complete brochure.

*The gasket people*



**KROLL & ZILLER GmbH & Co. KG**  
Reisholzstrasse 15  
D-40721 Hilden/Germany  
Telefon: +49 (0) 2103-951-500  
Fax Inland/domestic: +49 (0) 2103-951-508,509  
Fax Ausland/Export: +49 (0) 2103-951-510  
eMail: [Kroll-Ziller@t-online.de](mailto:Kroll-Ziller@t-online.de)  
<http://www.Kroll-Ziller.de>



*The gasket people*